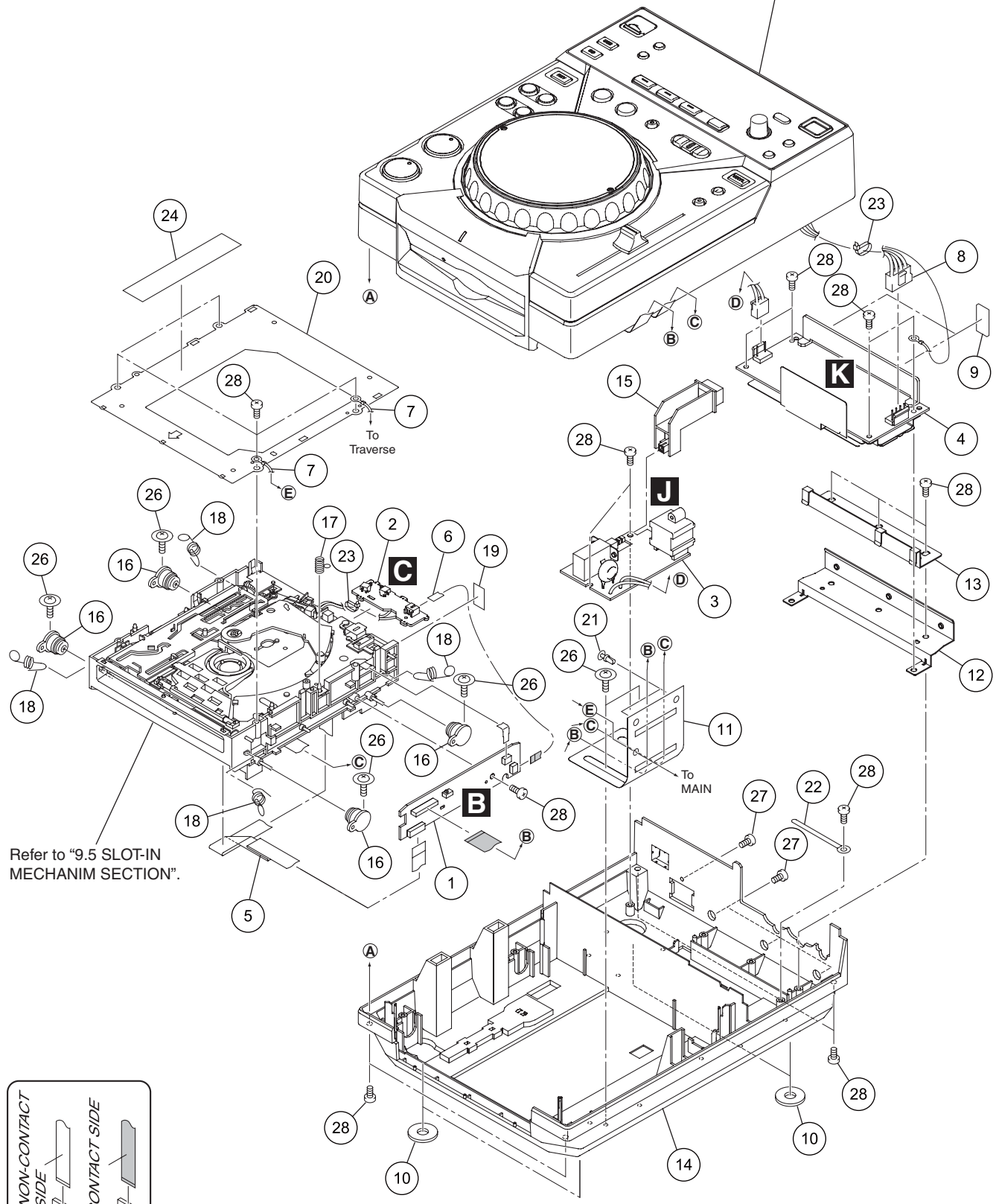


# 9.2 EXTERIOR SECTION

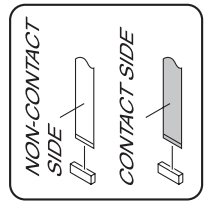
1 2 3 4

A  
B  
C  
D  
E  
F

Refer to "9.3 CONTROL PANEL SECTION".



Refer to "9.5 SLOT-IN MECHANISM SECTION".



1 2 3 4

**(1) EXTERIOR SECTION PARTS LIST**

<u>Mark No.</u>	<u>Description</u>	<u>Part No.</u>
1	CNCT Assy	DWX2762
2	SLMB Assy	DWS1404
3	ACIN Assy	See Contrast table (2)
⚠ 4	SW POWER SUPPLY	DWR1443
5	24P FFC	DDD1331
6	5P FFC	DDD1370
NSP 7	Earth Lead Wire	DE010VE0
8	Connector Assy	PF04EE-S22
NSP 9	Silicone Sheet D5 L	DEB1456
10	Insulator MO	DEC2250
11	Cable Protector	DEC3072
12	Heat Plate 1	DNH2814
13	Heat Plate 2	DNH2815
NSP 14	Chassis	See Contrast table (2)
15	Power Knob	DNK5017
16	Damper	CNV6011
17	Earth Spring	DBH1398
18	Float Spring G5	DBH1494
19	Tape	DEC3053
20	Mecha. Plate (FE)	DNH2642
21	Push Rivet	XEC3034
22	Cord Clamper	RNH-184-0
23	Binder (SKB-90BK)	ZCA-SKB90BK
24	Laser Caution	See Contrast table (2)
25	•••••	
26	DM Screw (FTC)	DBA1260
27	Screw	PBZ30P080FTB
28	Screw	BPZ30P080FTB

**(2) CONTRAST TABLE**

CDJ-400/KUCXJ, WYXJ5 and TLFXJ are constructed the same except for the following:

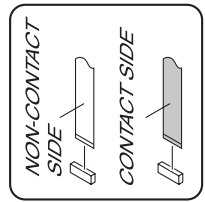
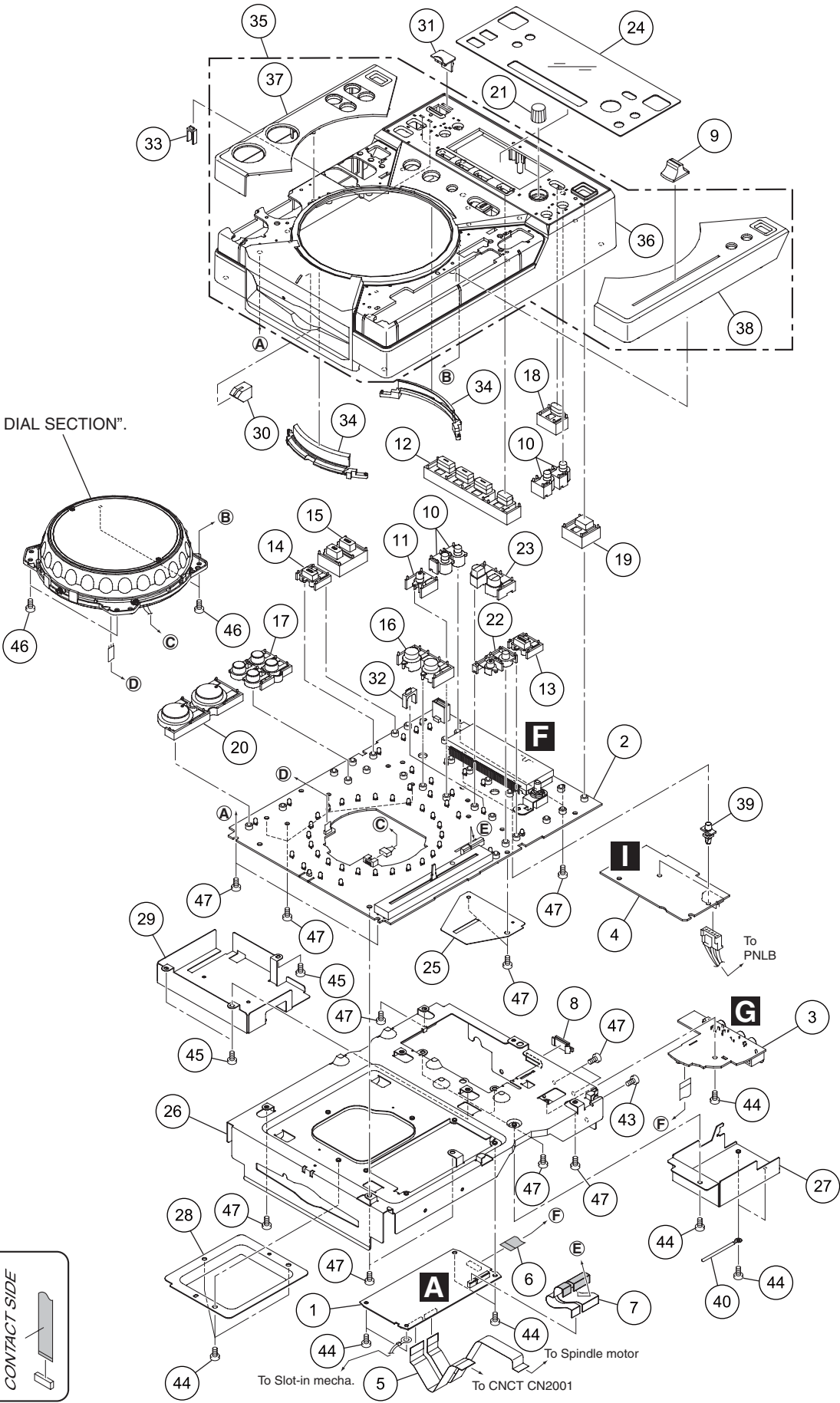
Mark	No.	Symbol and Description	CDJ-400/KUCXJ	CDJ-400/WYXJ5	CDJ-400/TLFXJ
NSP	3	ACIN Assy	DWX2800	DWX2766	DWX2766
	14	Chassis	DNK4984	DNK4983	DNK4985
	24	Laser Caution	DRW2308	DRW2308	DRW2248

# 9.3 CONTROL PANEL SECTION

1 2 3 4

A B C D E F

Refer to "9.4 JOG DIAL SECTION".



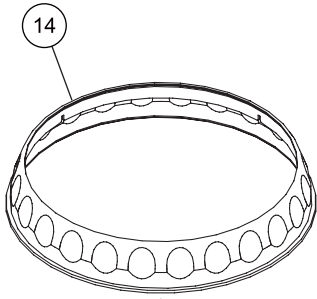
1 2 3 4

## CONTROL PANEL SECTION PARTS LIST

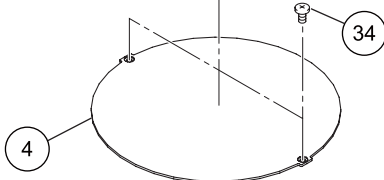
<u>Mark No.</u>	<u>Description</u>	<u>Part No.</u>	
NSP 1	MAIN Assy	DWG1652	
2	PNLB Assy	DWX2756	A
3	JACB Assy	DWX2759	
4	REGB Assy	DWR1442	
5	32P FFC	DDD1371	
6	17P FFC	DDD1372	
7	23P FFC	DDD1374	
8	Blind Cap	DNK4218	
9	Slide Knob	DAC2406	
10	TIME Knob	DAC2407	
11	RELOOP Knob	DAC2409	B
12	JOG EFFECT Knob	DAC2410	
13	VINYL Knob	DAC2411	
14	REVERSE Knob	DAC2412	
15	Set Knob (SELECT)	DAC2413	
16	Set Knob (LOOP)	DAC2414	
17	Set Knob (SEARCH)	DAC2415	
18	BACK Knob	DAC2416	
19	EJECT Knob	DAC2417	
20	PLAY Button	DAC2418	C
21	Dial Knob	DAC2419	
22	TEMPO Knob	DAC2423	
23	BEAT LOOP Knob	DAC2424	
24	Display Panel	DAH2549	
25	FFC guard	DEC3056	
26	MAIN PCB Stay	DNH2800	
27	Shield Case	DNH2801	
28	JOG Support	DNH2808	
29	Shield Case 2	DNH2813	
30	FRONT Lens	DNK4997	D
31	USB Cover	DNK4999	
32	BEAT LOOP Lens	DNK5042	
33	MEMORY Lens	DNK5049	
34	JOG Lens	DNK5078	
35	Control Panel Assy	DXB1977	
36	Control Panel	DNK5030	
37	Top Panel (L)	DNK5031	
38	Top Panel (R)	DNK5073	E
39	Locking Card Spacer	VEC2234	
40	Cord Clamper	RNH-184-0	
41	•••••		
42	•••••		
43	Screw (M3 x 5)	DBA1340	
44	Screw	BBZ30P060FTC	
45	Screw	BPZ30P100FTC	
46	Screw	CPZ30P080FTB	
47	Screw	BPZ30P080FTB	F

# 9.4 JOG DIAL SECTION

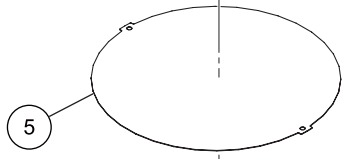
A



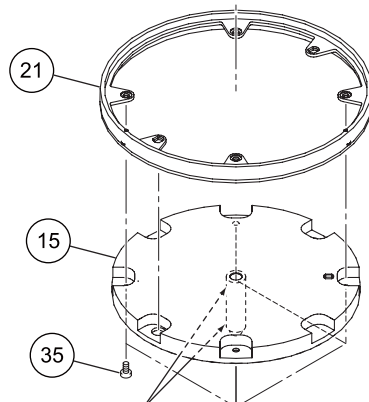
B



C



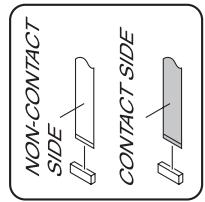
D



E

Grease  
GYA1001  
(ZLB-PN397B)

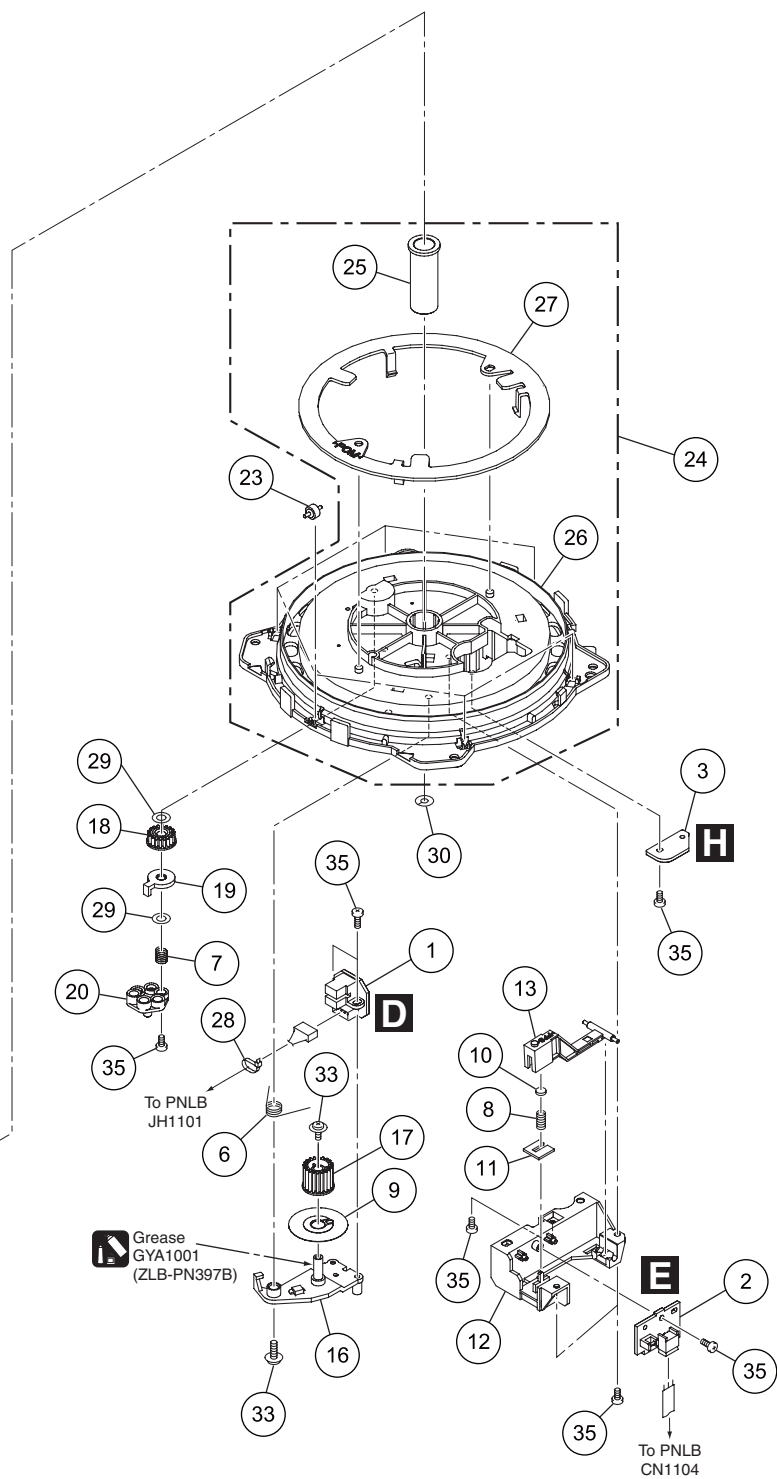
F



2

3

4



1

2

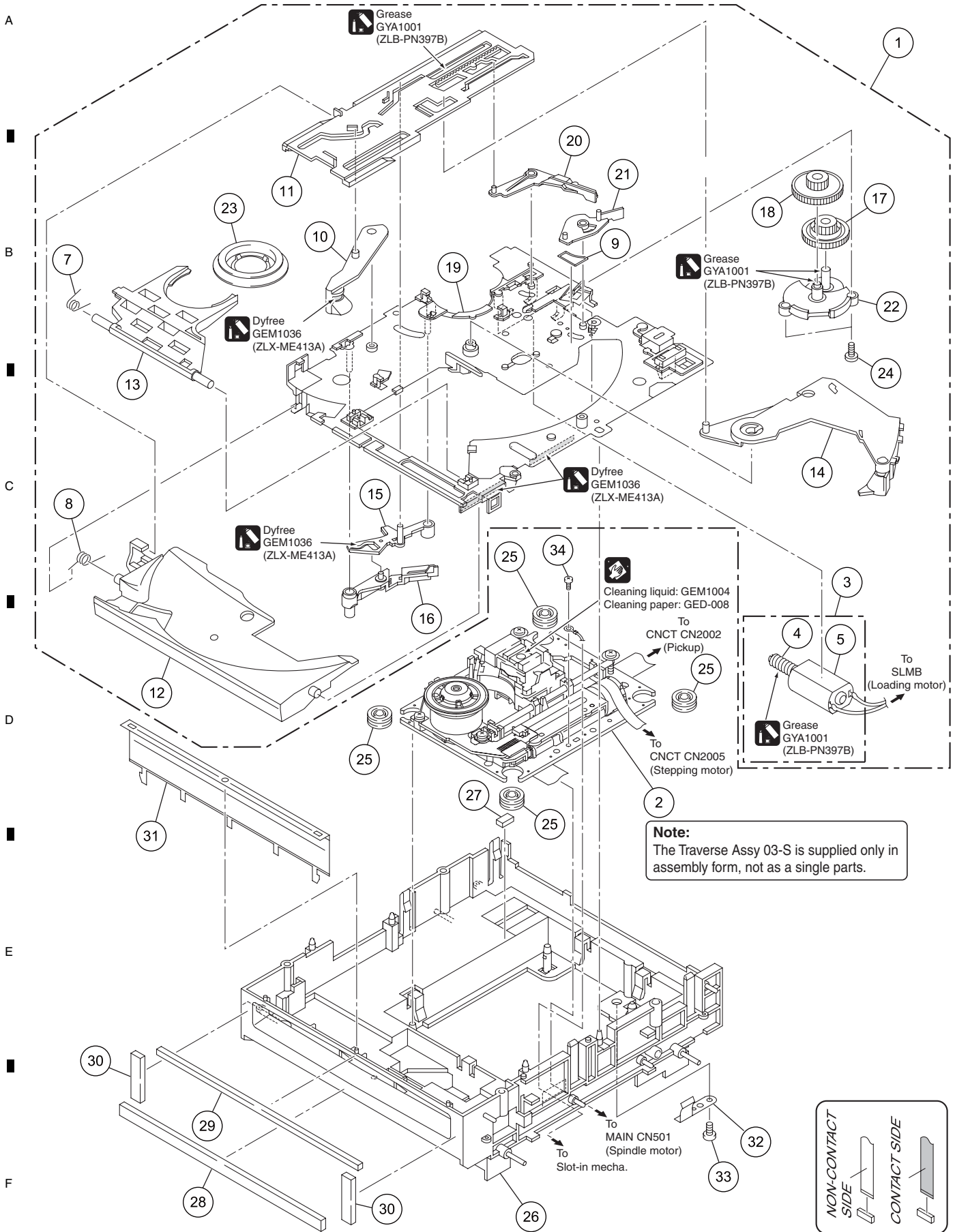
3

4

## JOG DIAL SECTION PARTS LIST

<u>Mark No.</u>	<u>Description</u>	<u>Part No.</u>	
1	JOGB Assy	DWX2760	
2	TCHB Assy	DWX2761	A
3	STPB Assy	DWX2792	
4	Jog Plate	DAH2565	
5	Jog Sheet	DAH2581	
6	Arm Spring	DBH1612	
7	Load Spring	DBH1632	
8	Lever Spring	DBH1626	
9	Encoder Plate	DEC2889	
10	Lever Cushion (A)	DEC3001	
11	Lever Cushion (B)	DEC3002	B
12	Lever Holder	DNK4762	
13	Jog Lever	DNK4763	
14	Jog B	DNK4932	
15	Jog Shaft	DNK4934	
16	Encoder Arm	DNK4936	
17	Encoder Gear	DNK4937	
18	Load Gear	DNK4938	
19	Load Smoother	DNK4939	
20	Adjust Plate	DNK4943	C
21	Ring Lens	DNK4979	
22	Jog A Assy	DXA2122	
23	Roller B Assy	DXB1877	
24	Jog Holder Assy	DXB1982	
25	Shaft Holder	DLA2042	
26	Jog Holder	DNK4933	
27	Slide Ring	DNK4935	
28	Binder (SKB-90BK)	ZCA-SKB90BK	
29	Washer	WA42D080D025	
30	Washer	WT32D080D050	D
31	.....		
32	.....		
33	Screw (FE)	DBA1265	
34	Screw	DBA1347	
35	Screw	BPZ20P060FTC	

# 9.5 SLOT-IN MECHANISM SECTION



## SLOT-IN MECHANISM SECTION PARTS LIST

<u>Mark No.</u>	<u>Description</u>	<u>Part No.</u>
NSP 1	Slot-in Mechanism Assy	DXA2121
2	03 Traverse Assy (Ro)	VXX3125
3	Loading Motor Assy-S	DXX2510
NSP 4	Worm Gear	DNK3910
NSP 5	DC Motor S (ROHS)	DXM1230
6	.....	
7	Clamp Spring	DBH1374
8	Guide Spring	DBH1375
9	SW Lever Spacer SV	DEC2831
10	Loading Gear	DNK3406
11	Main Cam	DNK3407
12	Disc Guide	DNK3478
13	Clamp Arm	DNK3576
14	Eject Lever	DNK3684
15	Lever AP	DNK3835
16	Lever BP	DNK3836
17	Loading Gear	DNK3911
18	Drive Gear	DNK3912
19	Loading Base SV	DNK4369
20	SW Lever SV1	DNK4370
21	SW Lever SV2	DNK4371
22	Gear Holder SV	DNK4372
23	Clamper 04 Assy	DXB1859
24	Screw	BPZ20P060FTC
25	Float Rubber (SI)	VEB1351
26	Float Base 04 Assy	DXB1838
27	Spacer POR (T3)	DEB1566
28	Vessel Cushion A	DEC2852
29	Vessel Cushion B	DEC2853
30	Vessel Cushion C	DEC2854
31	Front Sheet	DED1132
32	FPC Guard	DBK1282
33	Screw	BPZ30P080FTB
34	Screw	BBZ26P040FTC