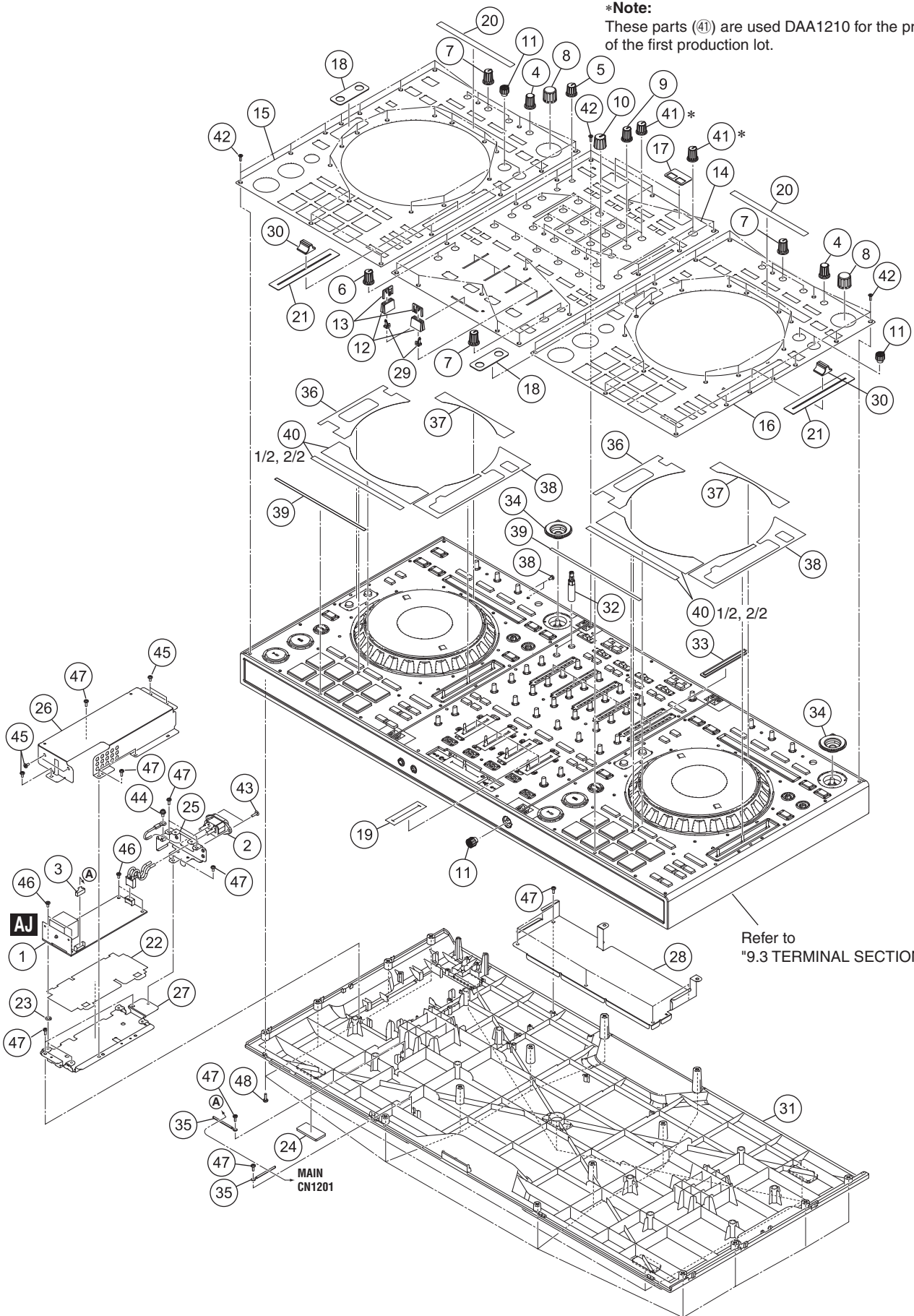


# 9.2 TOP and CHASSIS SECTION

A  
B  
C  
D  
E  
F

**\*Note:**  
These parts (41) are used DAA1210 for the products of the first production lot.

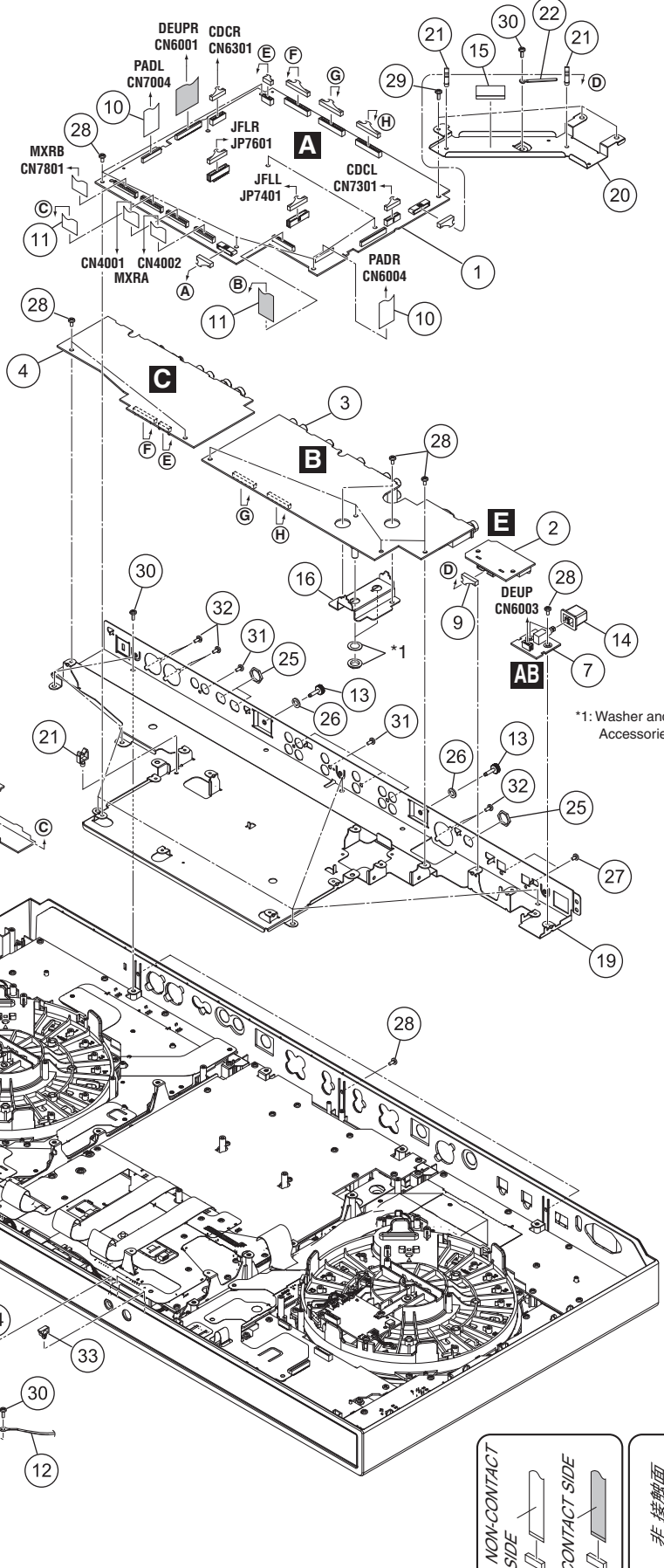


## TOP and CHASSIS SECTION PARTS LIST

<u>Mark No.</u>	<u>Description</u>	<u>Part No.</u>	
⚠	1 POWER SUPPLY Assy	DWR1463	
⚠	2 AC Inlet/3P	DKP3954	A
	3 Crimp Connector/6P	DKP3956	
	4 Rotary Sw Knob (C)	DAA1180	
	5 Knob (MA)	DAA1210	
	6 Knob (Black)	DAA1212	
	7 Rotary Knob (BN)	DAA1220	
	8 Dial Knob	DAA1259	
	9 Knob/RSW	DAA1305	
	10 Knob/FRE	DAA1309	
	11 Knob/CFC	DAA1326	B
	12 Slider Knob 1	DAC2684	
	13 Slider Knob 2	DAC2685	
	14 Plate/MIX	DAH2976	
	15 Plate/DEL	DAH2982	
	16 Plate/DER	DAH2983	
	17 Panel/USB	DAH2984	
	18 Panel/DEC	DAH2986	
	19 Fader Packing	DEC3355	
	20 Sheet/CDC	DEC3532	C
	21 Sheet/TMP	DEC3541	
	22 Barrier/SWP	DEC3553	
	23 Washer/PWR	DEC3554	
	24 Sheet/LEG	DEC3557	
	25 Bracket/ACI	DNF1932	
	26 Shield Case/U	DNH3142	
	27 Shield Case/L	DNH3143	
	28 Shield Plate	DNH3155	
	29 Slider Knob Stopper	DNK5888	D
	30 Knob/SLD	DNK5981	
	31 Chassis	DNK6286	
	32 Shaft/EXT	DNK6305	
	33 Lens/LVL	DNK6306	
	34 Ring/BRS	DNK6312	
	35 Cord Clamper (Steel)	RNH-184	
	36 DS Tape/ALL	DEH1048	
	37 DS Tape/ALT	DEH1049	
	38 DS Tape/ALR	DEH1050	E
	39 DS Tape/ALB	DEH1051	
	40 DS Tape/PAJ	DEH1056	
	41 Knob/SHR	DAA1333	
	42 Screw	CPZ26P080FTB	
	43 Screw	IBZ30P080FTB	
	44 Screw	PMH40P080FTC	
	45 Screw	BBZ30P060FTB	
	46 Screw	BBZ30P080FTB	F
	47 Screw	BPZ30P080FNI	
	48 Screw	BPZ30P100FTB	

# 9.3 TERMINAL SECTION

A  
B  
C  
D  
E  
F



Refer to "9.4 CONTROL PANEL SECTION".

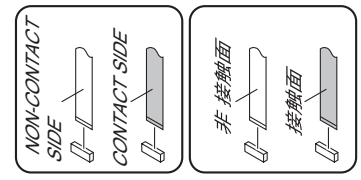
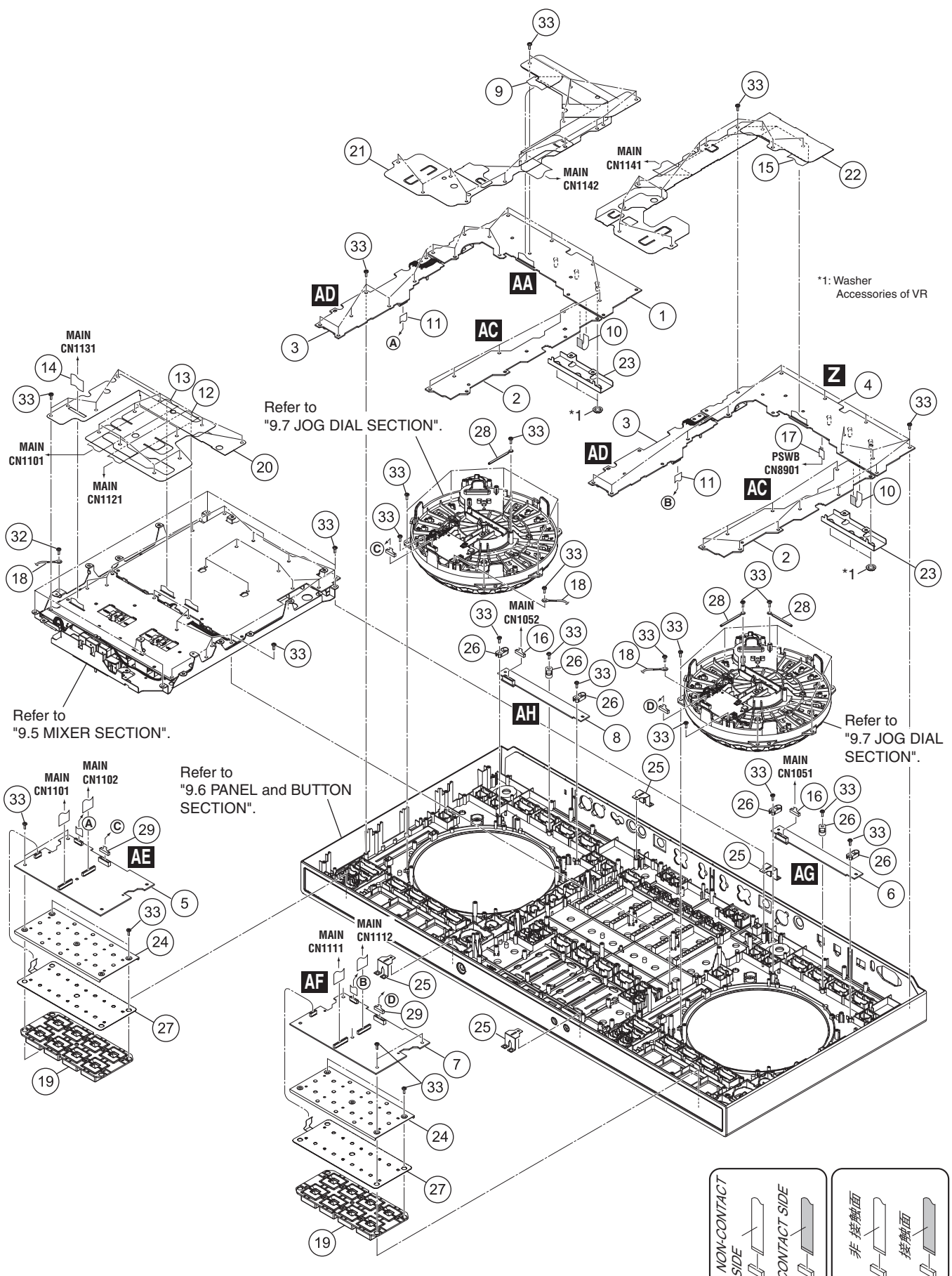
\*1: Washer and Nut Accessories of VR

## TERMINAL SECTION PARTS LIST

<u>Mark No.</u>	<u>Description</u>	<u>Part No.</u>	
1	MAIN Assy	DWX3535	
2	USBB Assy	DWX3555	A
3	AIJK Assy	DWX3536	
4	AOJK Assy	DWX3537	
5	HPJK Assy	DWX3538	
6	CRFCV Assy	DWX3547	
7	PSWB Assy	DWX3560	
8	STRB Assy	DWX3585	
9	Shielded Conn-Cable	DDA1048	
10	FFC/23P	DDD1658	
11	FFC/25P	DDD1659	B
12	Earth Lead Wire	DE012VC0	
13	Earth Terminal	DKE1015	
14	Power Knob	DAC2306	
15	Sheet/LEG	DEC3534	
16	Bracket/TRM	DNF1933	
17	Stay/CFC	DNF1935	
18	Stay/HP	DNF1937	
19	Plate/MGD	DNH3139	
20	Shield Plate/USB	DNH3156	C
21	Holder	VEC1355	
22	Cord Clamper (Steel)	RNH-184	
23	Push Rivet	XEC3034	
24	Barrier/HP	DEC3548	
25	Nut (M12)	NKX2FNI	
26	Spring Lock Washer	WS40FNI	
27	Screw (M3*5)	DBA1340	
28	Screw	BBZ30P060FTB	
29	Screw	BBZ30P080FTB	D
30	Screw	BPZ30P080FNI	
31	Screw	BPZ30P080FTB	
32	Screw	PPZ30P080FTB	
33	Locking Mini Clamp	DEC2439	

# 9.4 CONTROL PANEL SECTION

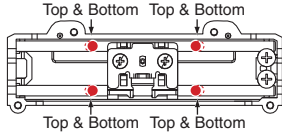
A  
B  
C  
D  
E  
F



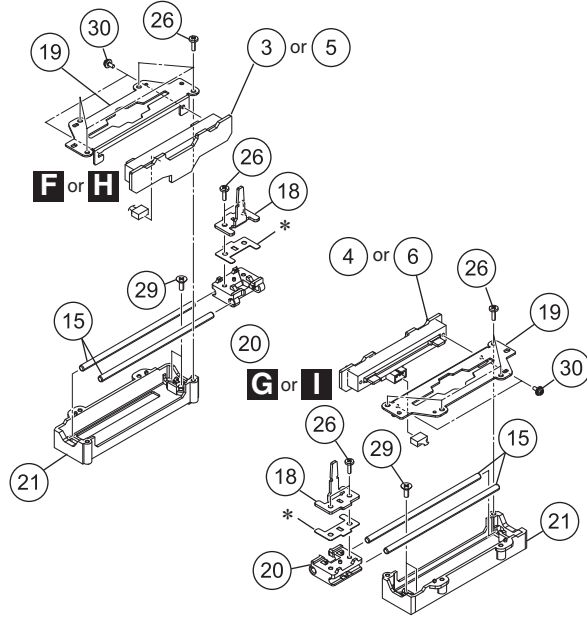
**CONTROL PANEL SECTION PARTS LIST**

<b>Mark No.</b>	<b>Description</b>	<b>Part No.</b>	
1	DEUP Assy	DWX3548	
2	KSWB Assy	DWX3549	A
3	SLDB Assy	DWX3550	
4	DEUPR Assy	DWX3580	
5	PADL Assy	DWX3553	
6	CDCL Assy	DWX3554	
7	PADR Assy	DWX3583	
8	CDCR Assy	DWX3584	
9	FFC/32P	DDD1657	
10	FFC/15P	DDD1660	
11	FFC/13P	DDD1661	B
12	FFC/25P	DDD1662	
13	FFC/23P	DDD1663	
14	FFC/27P	DDD1664	
15	FFC/32P	DDD1672	
16	Crimp Connector	PF08PP-B30	
17	Jumper Wire	D20PYY0310E	
18	Earth Lead Wire	DE012VC0	
19	Button/PAD	DEB2005	
20	Barrier/MIX	DEC3545	C
21	Barrier/DEL	DEC3546	
22	Barrier/DER	DEC3547	
23	Stay/PL	DND1279	
24	Bracket/FSR	DNF1930	
25	Plate/ART	DNH3144	
26	CDC Stopper	DNK5863	
27	Sensor	DSX1124	
28	Cord Clamper (Steel)	RNH-184	
29	Connector Assy	PF08PP-B07	D
30	•••••		
31	•••••		
32	Screw	BBZ30P060FTB	
33	Screw	BPZ30P080FNI	

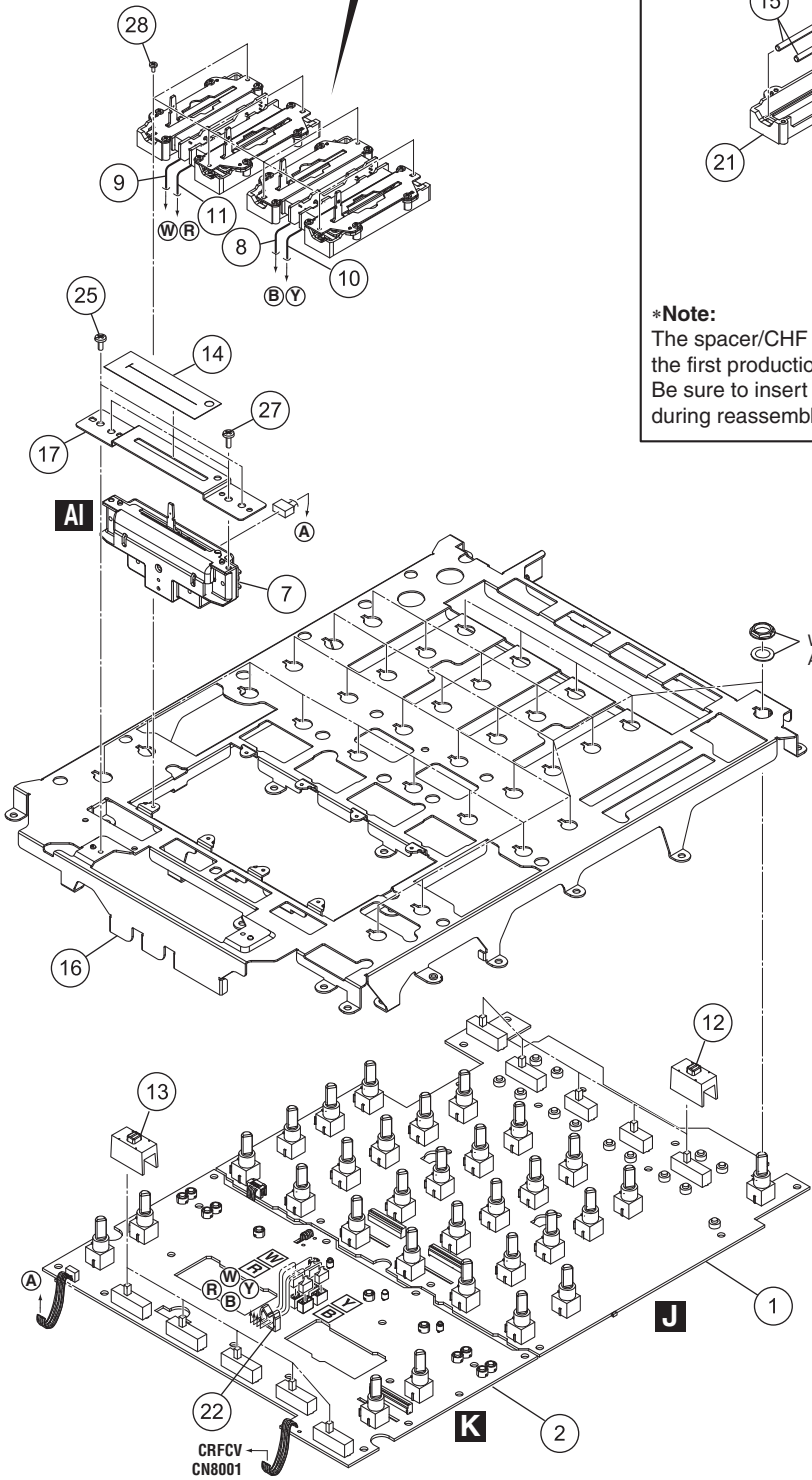
# 9.5 MIXER SECTION



**Note:**  
 Greasing must be performed at a total of 8 points, 2 points each for the upper and bottom places of each shaft. (0.4 to 1 mg per point × 8 points)  
 After applying grease, move the slider base back and forth from one end to the other for approximately 10 to 20 strokes, in order to fully spread the grease.



**\*Note:**  
 The spacer/CHF (Part No.: DEC3558) is used only for the products of the first production lot.  
 Be sure to insert the spacer into the position shown in the figure during reassembly after disassembly.



**MIXER SECTION PARTS LIST**

<b>Mark No.</b>	<b>Description</b>	<b>Part No.</b>	
1	MXRA Assy	DWX3543	
2	MXRB Assy	DWX3544	A
3	FAD1 Assy	DWX3540	
4	FAD2 Assy	DWX3541	
5	FAD3 Assy	DWX3539	
6	FAD4 Assy	DWX3542	
7	CROSS FADER Assy	DXA2257	
8	Connector Assy	PF03PP-B12	
9	Connector Assy	PF03PP2B07	
10	Connector Assy	PF03PP4B12	
11	Connector Assy	PF03PP6B07	B
12	Slide SW Cap	DAC2400	
13	Slide SW Cap (W)	DAC2401	
14	Packing/FAD	DEC3542	
NSP 15	Guide Shaft (S)	DLA1918	
16	Stay/MIX	DND1280	
17	Stay/CRF	DNF1936	
18	Lever Plate	DNH2954	
19	VR Stay	DNH2955	
20	Slider Base	DNK5851	C
21	Shaft Holder	DNK5852	
22	Holder	VEC1355	
23	•••••		
24	•••••		
25	Screw	BBZ30P060FTB	
26	Screw	BPZ20P060FTC	
27	Screw	BPZ30P080FNI	
28	Screw	BSZ20P040FTB	
29	Screw	CPZ26P080FTC	D
30	Screw	PMH20P040FTC	



# 9.6 PANEL and BUTTON SECTION

A

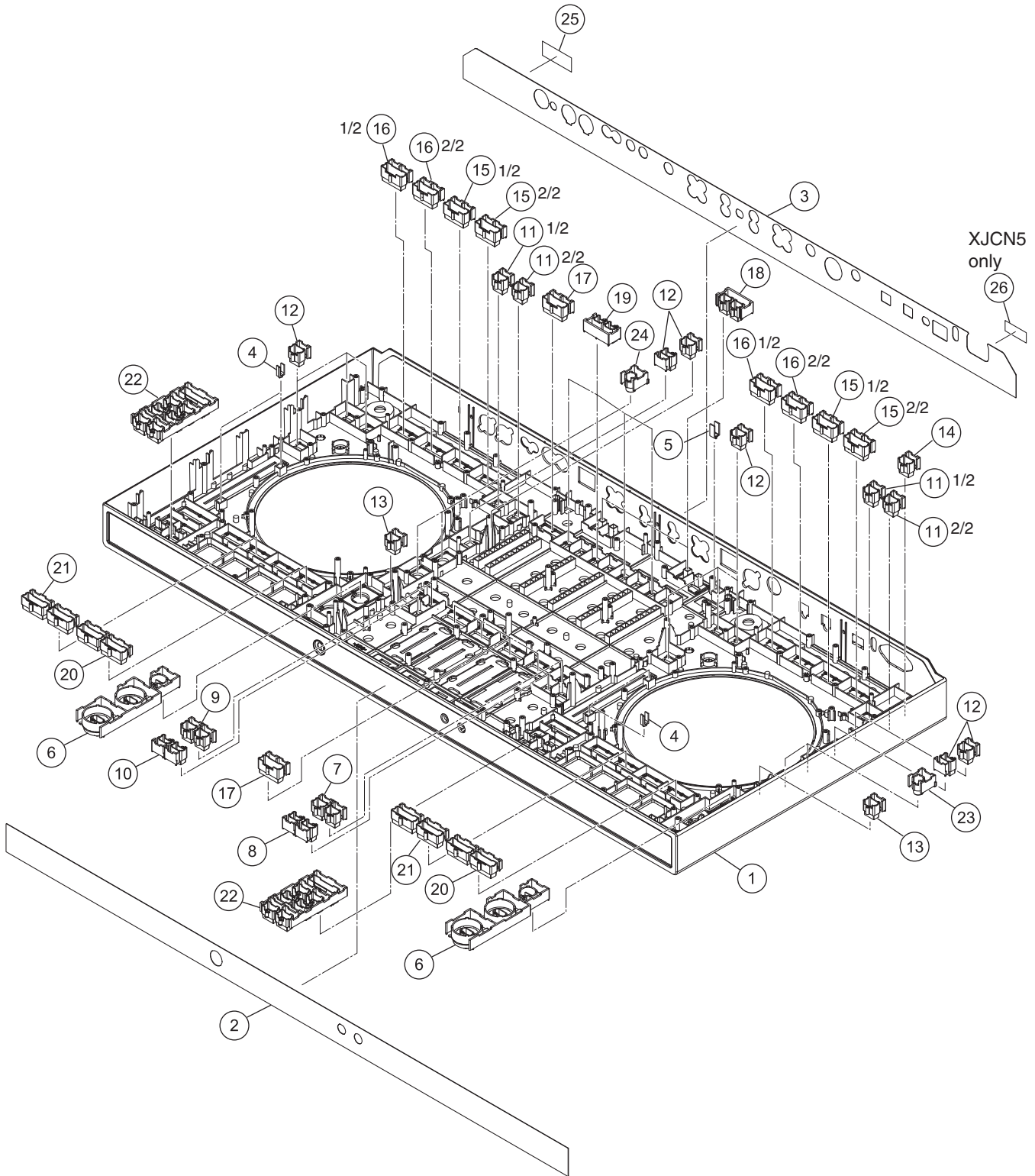
B

C

D

E

F



**(1) PANEL and BUTTON SECTION PARTS LIST**

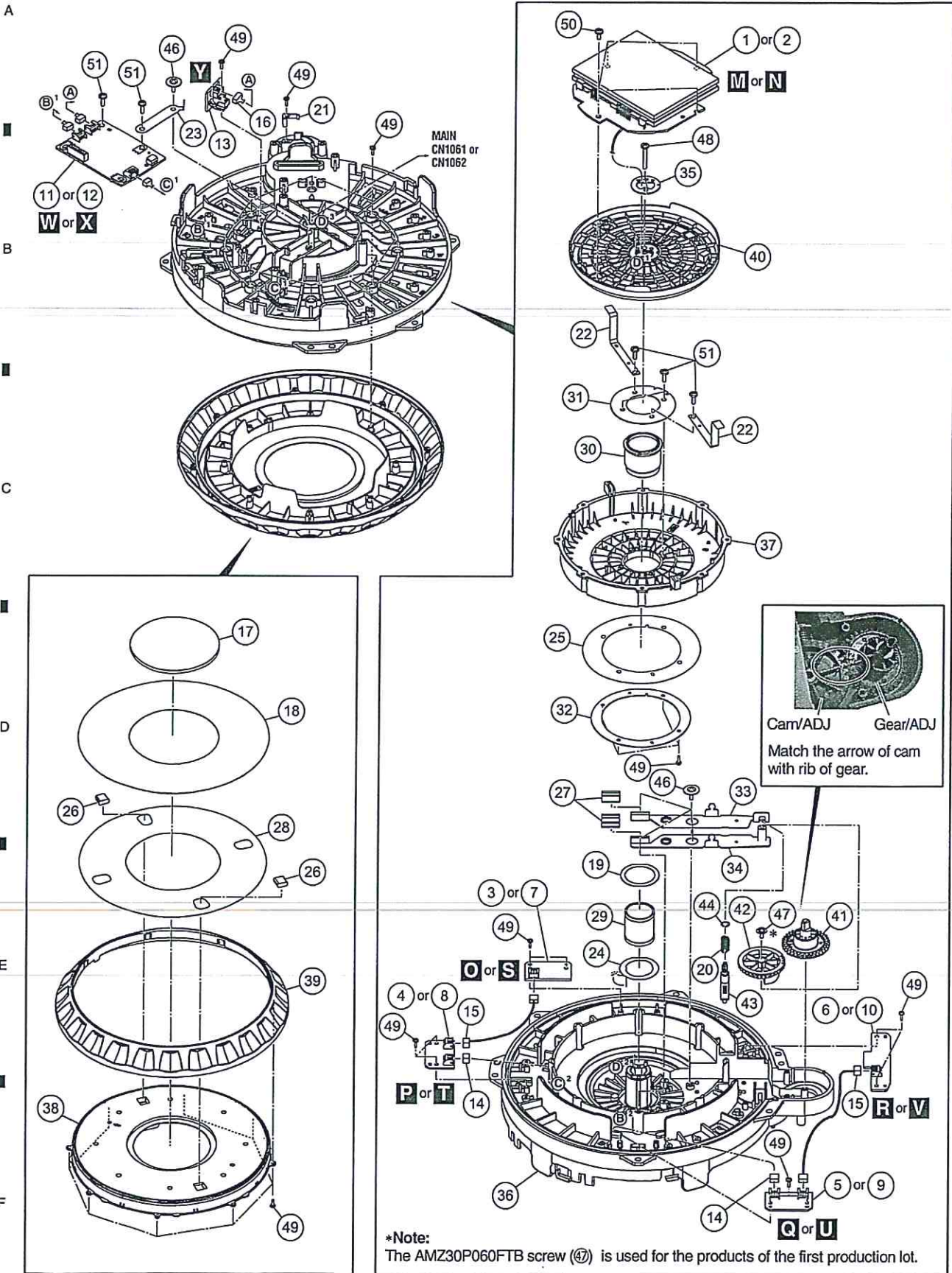
<b>Mark No.</b>	<b>Description</b>	<b>Part No.</b>
1	Control Panel	DNK6285
2	Sheet/FR	DAH2991
3	Sheet	See Contrast table (2)
4	Lens/TMP	DNK6307
5	Lens/MIC	DNK6308
6	Button/PLY	DAC2982
7	Button/CX1	DAC2983
8	Button/CX2	DAC2984
9	Button/FX1	DAC2985
10	Button/FX2	DAC2986
11	Button/CEN	DAC2987
12	Button/ANY	DAC2988
13	Button/SHT	DAC2989
14	Button/PNL	DAC2990
15	Button/ON	DAC2991
16	Button/TAP	DAC2992
17	Button/CUE	DAC2993
18	Button/USB	DAC2994
19	Button/FX	DAC2995
20	Button/PM1	DAC2996
21	Button/PM2	DAC2997
22	Button/ATL	DAC2998
23	Button/DEL	DAC3000
24	Button/DEL	DAC3001
NSP 25	Serial Label (UPC)	DRW2311
NSP 26	Name Label /CSZ	See Contrast table (2)

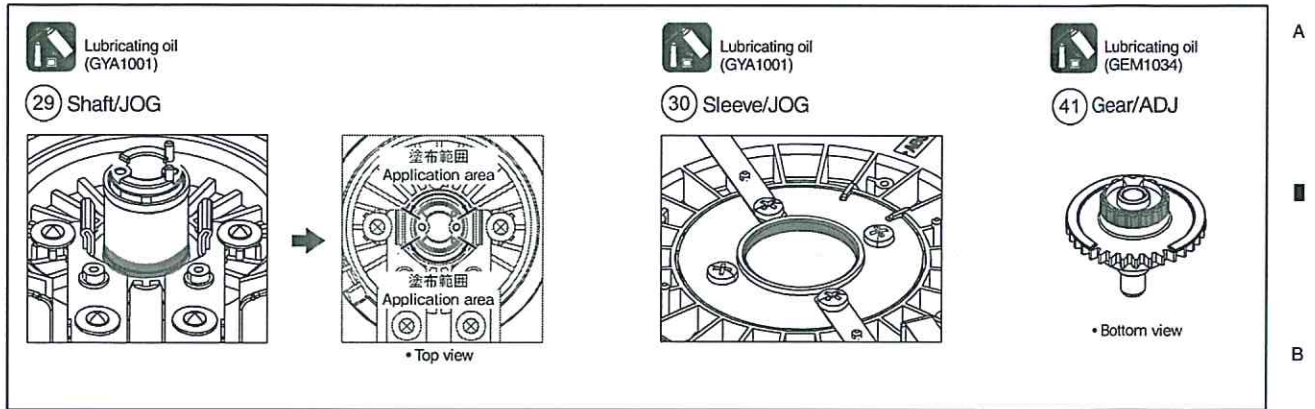
**(2) CONTRAST TABLE**

DDJ-SZ/UXJCB, LSYXJ8 and XJCN5 are constructed the same except for the following:

<b>Mark</b>	<b>No.</b>	<b>Symbol and Description</b>	<b>DDJ-SZ /UXJCB</b>	<b>DDJ-SZ /LSYXJ8</b>	<b>DDJ-SZ /XJCN5</b>
	3	Sheet	DAH2992	DAH2992	DAH2994
NSP	26	Name Label/CSZ	Not used	Not used	DAL1269

# 9.7 JOG DIAL SECTION





### JOG DIAL SECTION PARTS LIST

Mark No.	Description	Part No.	Mark No.	Description	Part No.
1	JFL Ass'y	DWX3545	31	Bracket/JOG	DNH3130
2	JFLR Ass'y	DWX3546	32	Bracket/SLT	DNH3131
3	JLL1 Ass'y	DWX3556	33	Lever/A	DNH3132
4	JLL2 Ass'y	DWX3557	34	Lever/B	DNH3133
5	JLL3 Ass'y	DWX3558	35	Cover/JOG	DNH3159
6	JLL4 Ass'y	DWX3559	36	Holder/JOG	DNK6269
7	JLR1 Ass'y	DWX3561	37	Jog Dial/BAS	DNK6270
8	JLR2 Ass'y	DWX3562	38	Jog Dial/A	DNK6271
9	JLR3 Ass'y	DWX3563	39	Jog Dial/B	DNK6272
10	JLR4 Ass'y	DWX3564	40	Holder/FL	DNK6273
11	JOGTL Ass'y	DWX3551	41	Gear/ADJ	DNK6274
12	JOGTR Ass'y	DWX3565	42	Cam/ADJ	DNK6275
13	JOGR Ass'y	DWX3552	43	Pin/ADJ	DNK6276
14	Connector Ass'y	PF03PP-B07	44	Washer	WA41D070D025
15	Connector Ass'y	PF03PP-B12	45	•••••	
16	Connector Ass'y	PF04PP-B12	46	DM Screw (FTC)	DBA1260
17	Jog Panel	DAH2609	47	Screw	IMZ30P060FTB
18	Plate/JOG	DAH2915	48	Screw	BBZ30P180FTC
19	Washer/JOG	DBE1016	49	Screw	BPZ20P060FTC
20	Coil Spring/ADJ	DBH1802	50	Screw	BPZ30P060FTC
21	Leaf Spring/ADJ	DBK1376	51	Screw	BPZ30P080FNI
22	Leaf Spring/A	DBK1379			
23	Leaf Spring/B	DBK1380			
24	Leaf Spring/C	DBK1382			
25	Slit/JOG	DEC3515			
26	Gasket/JOG	DEC3556			
27	Felt/JOG	DED1187			
28	DS Tape/JOG	DEH1047			
29	Shaft/JOG	DLA2225			
30	Sleeve/JOG	DLA2226			