

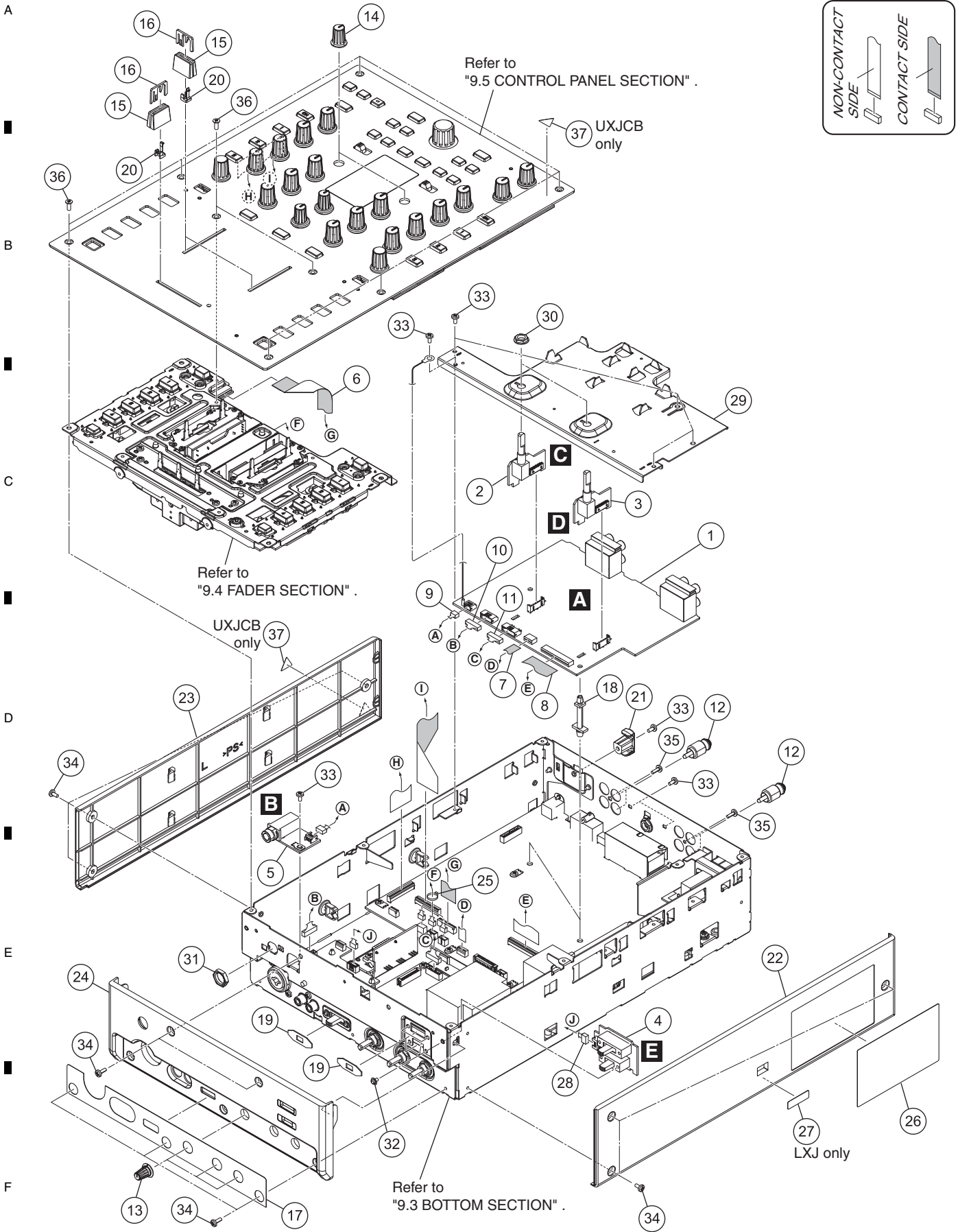
9.2 EXTERIOR SECTION

1

2

3

4



1

2

3

4

(1) EXTERIOR SECTION PARTS LIST

Mark No.	Description	Part No.	Mark No.	Description	Part No.
1	INPUT Assy	DWX3282	21	Cord Hook	DNK5928
2	TRM1 Assy	DWX3268	⚠	22 Side Panel R	See Contrast table (2)
3	TRM2 Assy	DWX3269	⚠	23 Side Panel L	DNK5942
4	FDSW Assy	DWX3266	⚠	24 Front Panel	DNK5943
5	HPJK Assy	DWX3267	25	Binder	ZCA-SKB90BK
6	FFC/17P	DDD1577	NSP	26 Label	See Contrast table (2)
7	FFC/7P	DDD1579	NSP	27 V Select Label	See Contrast table (2)
8	FFC/31P	DDD1580	28	Connector Assy	PF04PP-B20
9	Crimp Connector/3P	DKP3917	29	TRIM Stay	DNF1878
10	Connector Assy 6P	PF06PP-D22	30	Flange Nut M7	DBN1011
11	Connector Assy	PF07PP-D15	31	Nut M12	DBN1018
12	Short Pin Plug	AKM7008	32	Screw	AMZ26P040FTC
13	Rotary Knob (SS)	DAA1164	33	Screw	BBZ30P060FTB
14	Rotary VR Knob	DAA1276	34	Screw	BBZ30P080FTB
15	Slider Knob 1	DAC2684	35	Screw	BPZ30P080FTB
16	Slider Knob 2	DAC2685	36	Screw (FE)	DBA1290
17	Front Sheet	DAK1002	NSP	37 Label	See Contrast table (2)
NSP	18 PCB Spacer	DEC1389			
	19 Packing/SW	DEC3378			
	20 Slider Knob Stopper	DNK5888			

(2) CONTRAST TABLE

DJM-T1/SYXJ8, UXJCB, LXJ, KXJ5 and XJCN5 are constructed the same except for the following:

Mark	No.	Symbol and Description	DJM-T1/ SYXJ8	DJM-T1/ UXJCB	DJM-T1/ LXJ	DJM-T1/ KXJ5	DJM-T1/ XJCN5
⚠	22	Side Panel R	DNK5941	DNK5941	DNK5946	DNK5941	DNK5941
NSP	26	Label	DAL1181	DAL1182	DAL1184	DAL1185	DAL1186
NSP	27	V Select Label	Not used	Not used	DRW2349	Not used	Not used
NSP	37	Label	Not used	DRW1975	Not used	Not used	Not used

9.3 BOTTOM SECTION

A

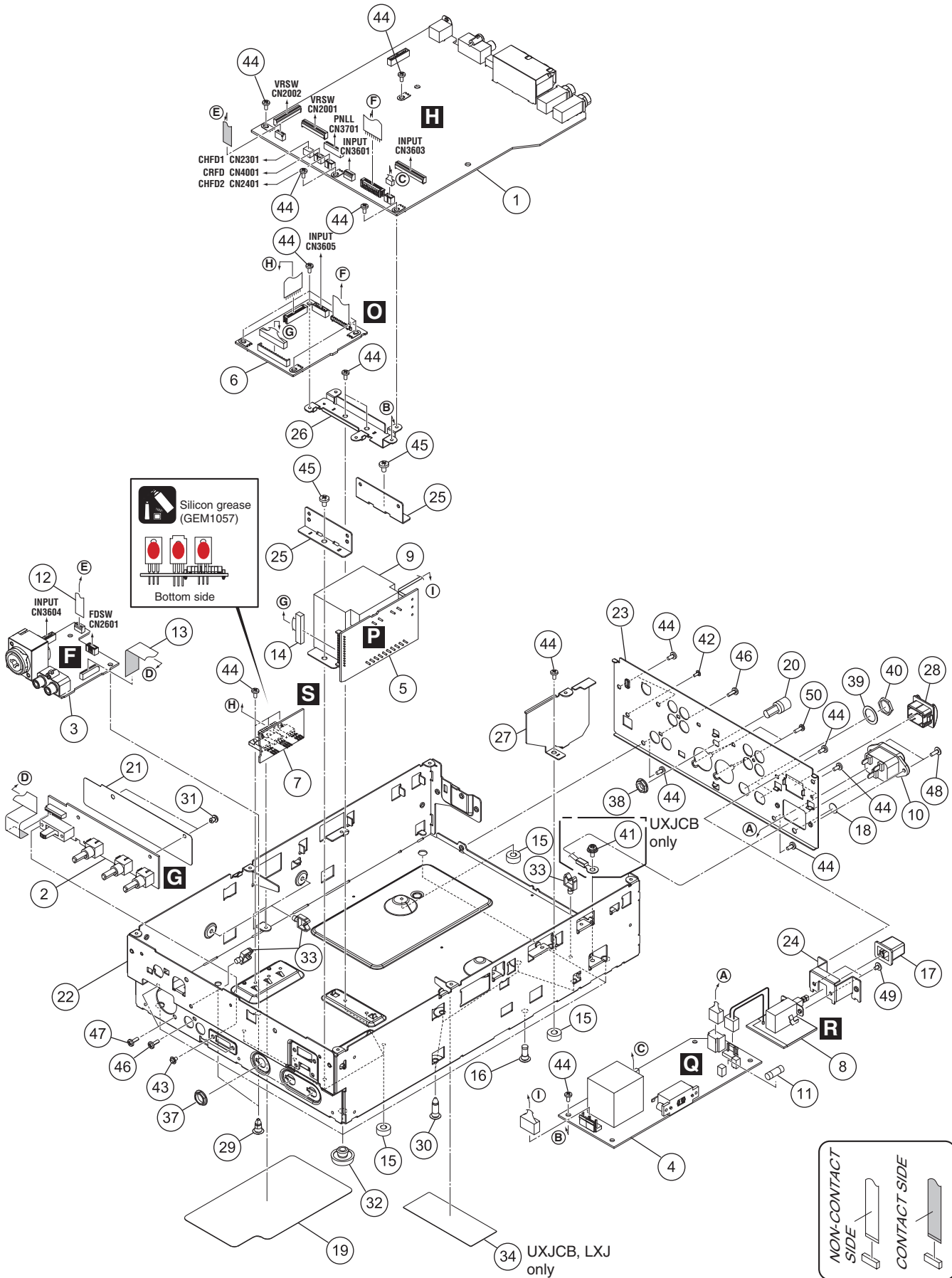
B

C

D

E

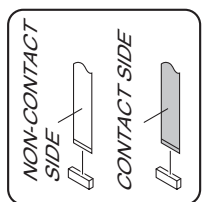
F



Silicon grease (GEM1057)
Bottom side

UXJCB only

UXJCB, LXJ only



(1) BOTTOM SECTION PARTS LIST

Mark No.	Description	Part No.	Mark No.	Description	Part No.
1	OUTPUT Assy	DWX3257	26	MAIN Stay	DNF1879
2	MCVR Assy	DWX3264	27	Shield Plate/PW	DNF1886
3	MCJK Assy	DWX3265	28	Power Knob Guard	DNK4534
4	PRIMARY Assy	See Contrast table (2)	NSP 29	PCB Holder	PNW1706
5	TRANS Assy	See Contrast table (2)	30	PCB Holder	PNW2029
6	SECONDARY Assy	DWR1503	31	Rivet (Plastic)	RBM-003
7	REG Assy	DWR1504	32	Foot (Rubber)	REC-434
8	ACSW Assy	DWS1435	33	Holder	VEC1355
⚠ 9	Power Transformer (T3101)	See Contrast table (2)	NSP 34	FCC Label	See Contrast table (2)
⚠ 10	AC Inlet	See Contrast table (2)	35	•••••	
⚠ 11	Fuse (FU1901: T500 mA)	AEK1051	36	•••••	
12	FFC/6P	DDD1578	37	Flange Nut M9	DBN1008
13	FFC/17P	DDD1581	38	Flange Nut M7	DBN1011
14	Connector Assy	PF13EE-S12	39	Washer	DEC2920
NSP 15	Spacer	AEB7092	40	Nut (M12)	NKX2FNI
16	PCB Holder	AEC7057	41	Screw	See Contrast table (2)
17	Power Knob	DAC2306	42	Screw (M3x5)	DBA1340
18	Blind Label	DEC2928	43	Screw	AMZ26P040FTC
19	Bottom Sheet	DEC3365	44	Screw	BBZ30P060FTB
20	Terminal Screw	DKE1014	45	Screw	BBZ40P060FTC
21	Shield Sheet C	DMR1003	46	Screw	BPZ30P080FTB
22	Chassis	DNA1430	47	Screw	BPZ30P120FTB
23	Rear Panel	See Contrast table (2)	48	Screw	IBZ30P080FTB
24	Bracket PSW	DNF1759	49	Screw	IMZ30P040FTC
25	Trans Stay	DNF1839	50	Screw	PPZ30P080FTB

(2) CONTRAST TABLE

DJM-T1/SYXJ8, UXJCB, LXJ, KXJ5 and XJCN5 are constructed the same except for the following:

Mark	No.	Symbol and Description	DJM-T1/ SYXJ8	DJM-T1/ UXJCB	DJM-T1/ LXJ	DJM-T1/ KXJ5	DJM-T1/ XJCN5
⚠	4	PRIMARY Assy	DWR1496	DWR1498	DWR1497	DWR1496	DWR1496
	5	TRANS Assy	DWR1500	DWR1501	DWR1505	DWR1500	DWR1500
	9	Power Transformer (T3101)	DTT1225	DTT1226	DTT1225	DTT1225	DTT1225
	10	AC Inlet/2P	DKP3916	Not used	DKP3916	DKP3916	DKP3916
	10	AC Inlet/3P	Not used	DKP3915	Not used	Not used	Not used
NSP	23	Rear Panel	DNC2055	DNC2056	DNC2058	DNC2059	DNC2060
	34	FCC, CLASS B Label	Not used	DRW2300	Not used	Not used	Not used
	34	FCC Label	Not used	Not used	DRW2299	Not used	Not used
	41	Screw	Not used	PMH40P080FTC	Not used	Not used	Not used

9.4 FADER SECTION

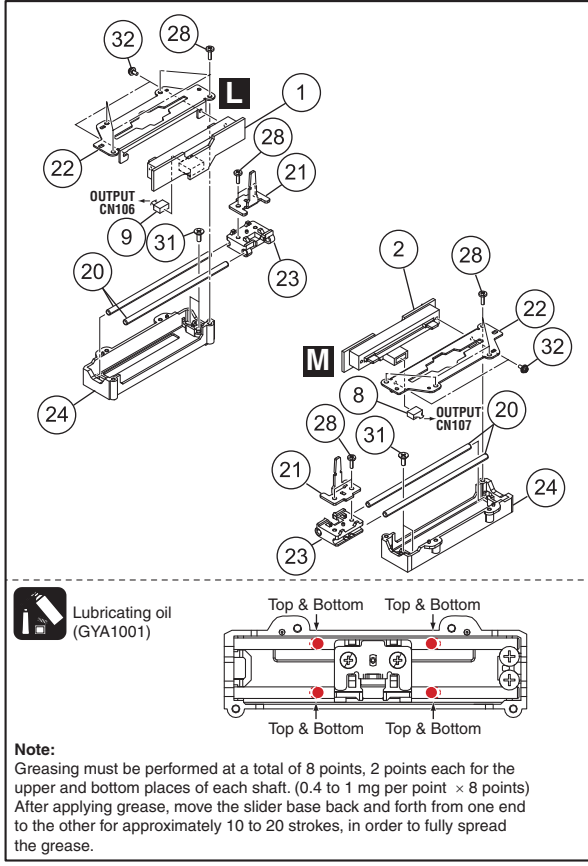
1

2

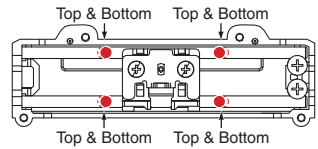
3

4

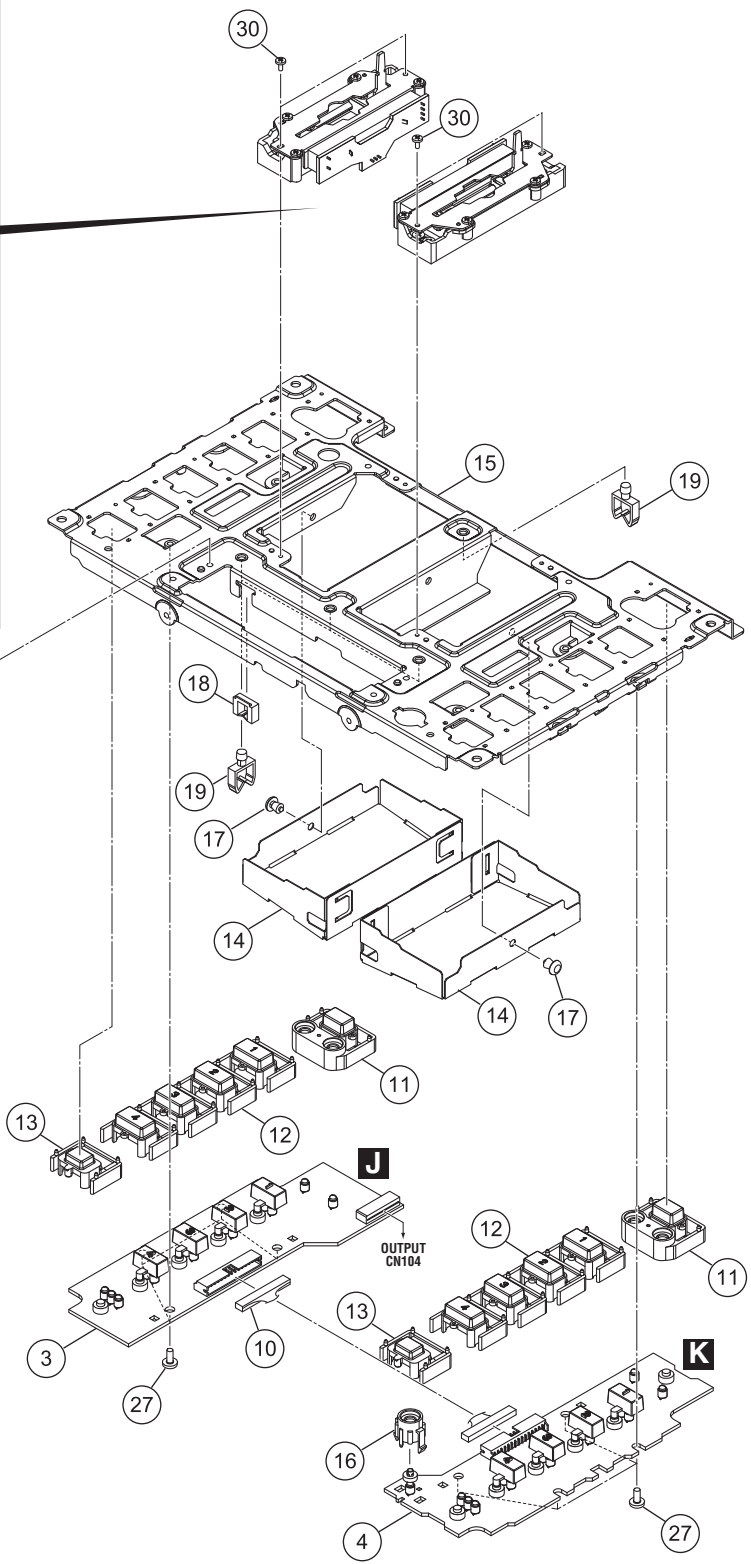
A
B
C
D
E
F



Lubricating oil (GYA1001)



Note:
Greasing must be performed at a total of 8 points, 2 points each for the upper and bottom places of each shaft. (0.4 to 1 mg per point × 8 points)
After applying grease, move the slider base back and forth from one end to the other for approximately 10 to 20 strokes, in order to fully spread the grease.



1

2

3

4

FADER SECTION PARTS LIST

Mark No.	Description	Part No.
1	CHFD1 Assy	DWX3260
2	CHFD2 Assy	DWX3261
3	PNLL Assy	DWX3262
4	PNLR Assy	DWX3263
5	1..CROSS FADER Assy	DXA2243
NSP 6	2..CRFD Assy	DWX3258
7	Connector Assy	PF03PP-Q30
8	Connector Assy	PF03PP2Q17
9	Connector Assy	PF03PP6Q17
10	Connector Assy	PF15PP-Q20
11	Button MODE	DAC2759
12	Button HOT CUE	DAC2762
13	Button/ACT	DAC2775
14	Shield Sheet B	DMR1002
15	Panel Stay	DNF1880
16	Holder/LED	DNK5973
17	Rivet (Plastic)	RBM-003
18	Edge Saddle	DEC1807
19	Holder	VEC1355
NSP 20	Guide Shaft (S)	DLA1918
21	Lever Plate	DNH2954
22	VR Stay	DNH2955
23	Slider Base	DNK5851
24	Shaft Holder	DNK5852
25	CRF Stay	DNF1874
26	•••••	
27	Screw	BBZ30P060FTB
28	Screw	BPZ20P060FTC
29	Screw	BPZ30P080FTB
30	Screw	BSZ20P040FTB
31	Screw	CPZ26P080FTC
32	Screw	PMH20P040FTC

A

B

C

D

E

F

9.5 CONTROL PANEL SECTION

1

2

3

4

A

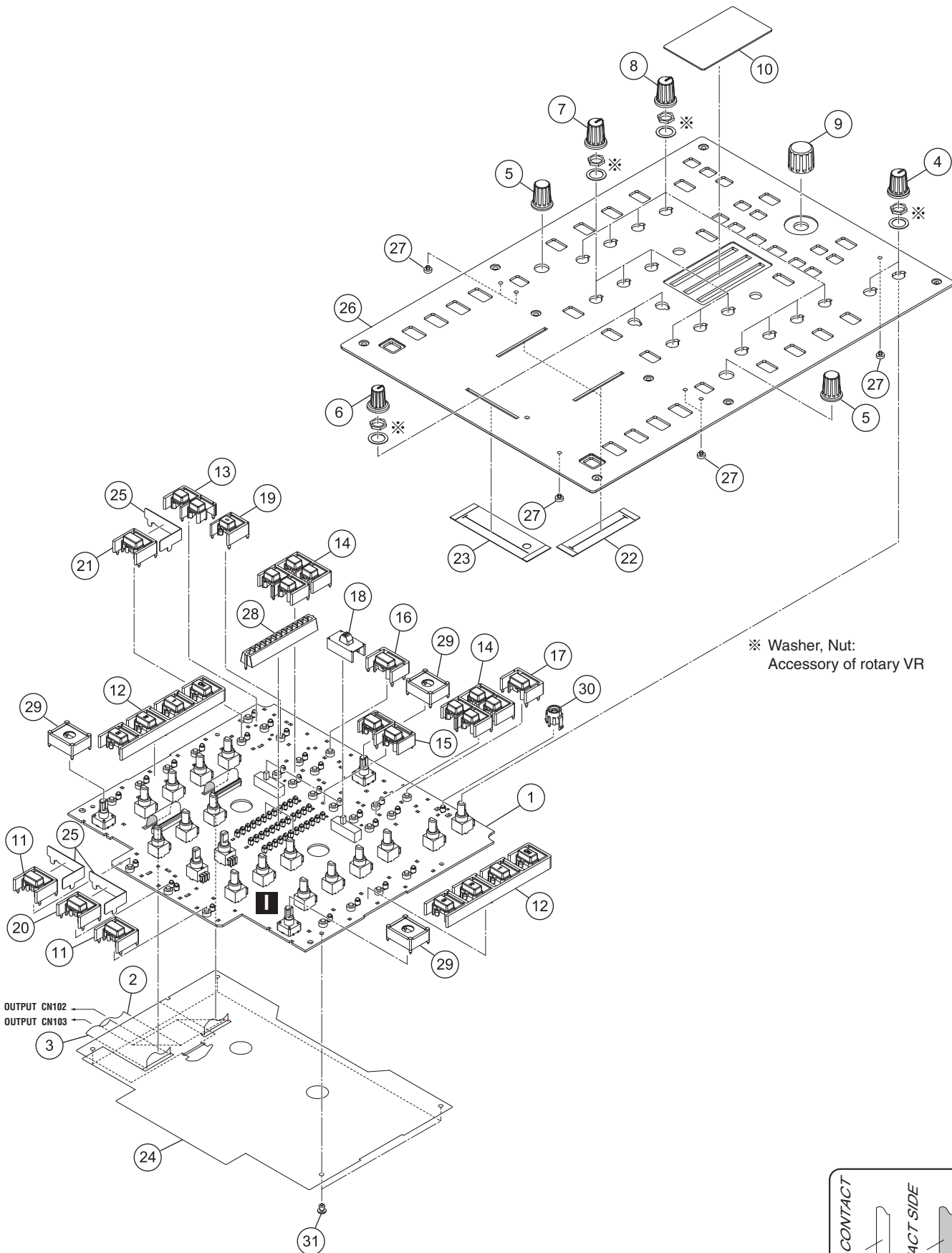
B

C

D

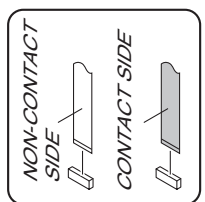
E

F



※ Washer, Nut:
Accessory of rotary VR

OUTPUT CN102
OUTPUT CN103



1

2

3

4

CONTROL PANEL SECTION PARTS LIST

Mark No.	Description	Part No.	
1	VRSW Assy	DWX3259	
2	FFC/25P	DDD1575	A
3	FFC/27P	DDD1576	
4	Rotary VR Knob (B)	DAA1183	
5	Dial Knob	DAA1277	
6	Rotary VR Knob	DAA1278	
7	Rotary VR Knob (B)	DAA1279	
8	Rotary VR Knob (G)	DAA1280	
9	Knob	DAA1281	
10	Level Plate	DAH2855	
11	Button CUE	DAC2758	B
12	Button FX	DAC2760	
13	Button MIDI	DAC2761	
14	Button DECK	DAC2763	
15	Button SYNC	DAC2765	
16	Button LOAD A	DAC2766	
17	Button LOAD B	DAC2767	
18	Cap/MIC	DAC2773	
19	Button/UTI	DAC2776	
20	Button/SFT	DAC2778	C
21	Button/SNP	DAC2779	
22	Fader Packing	DEC2903	
23	Packing/FAD	DEC3377	
⚠ 24	Shield Sheet A	DMR1001	
25	Shield Sheet/D	DMR1004	
26	Control Panel	DNB1191	
27	Lens	DNK4532	
28	Level Meter Holder	DNK5940	
29	Spacer	DNK5944	D
30	Holder/LED	DNK5973	
31	Rivet (Plastic)	RBM-003	