

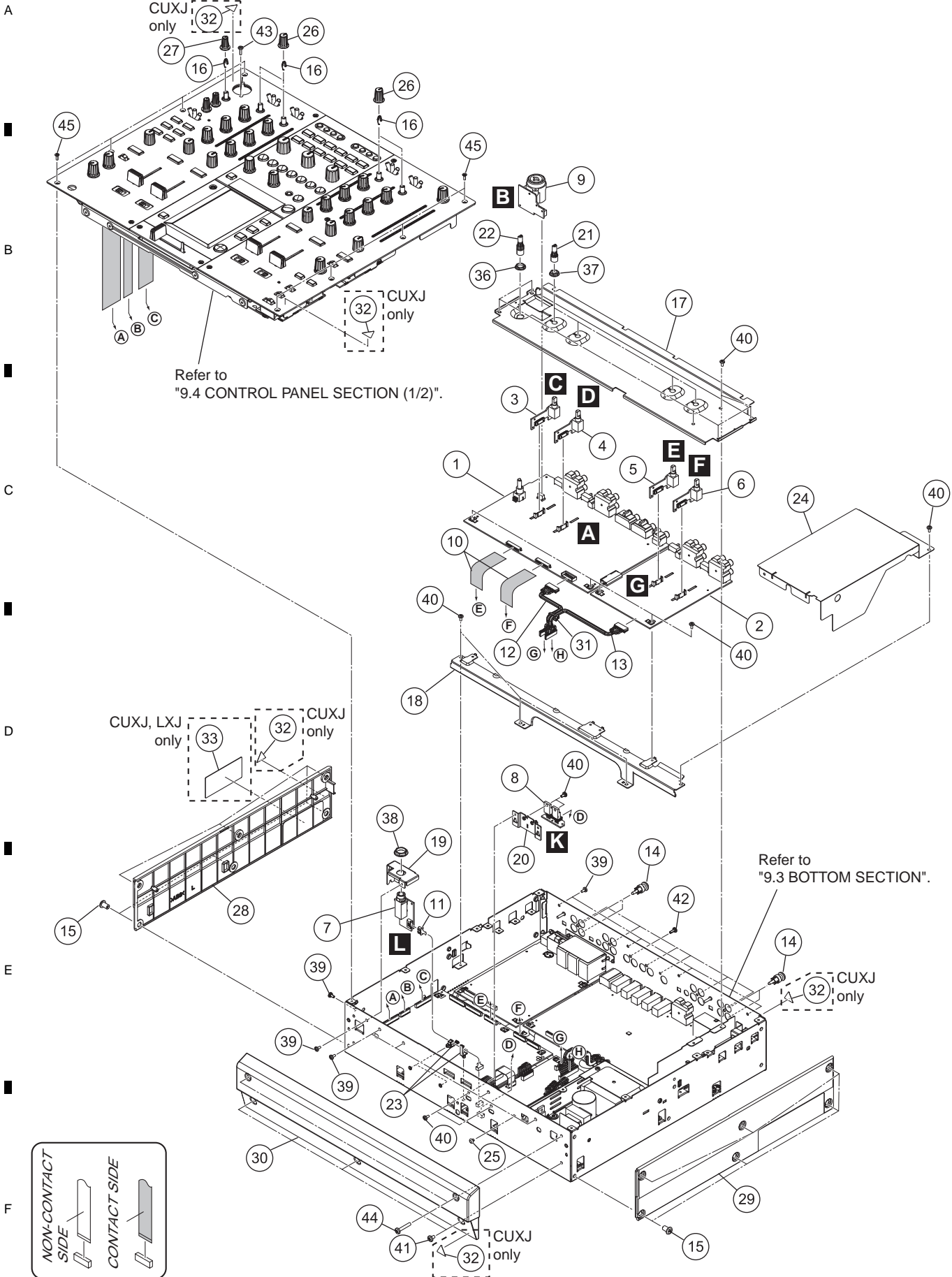
9.2 EXTERIOR SECTION

1

2

3

4



1

2

3

4

(1) EXTERIOR SECTION PARTS LIST

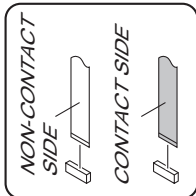
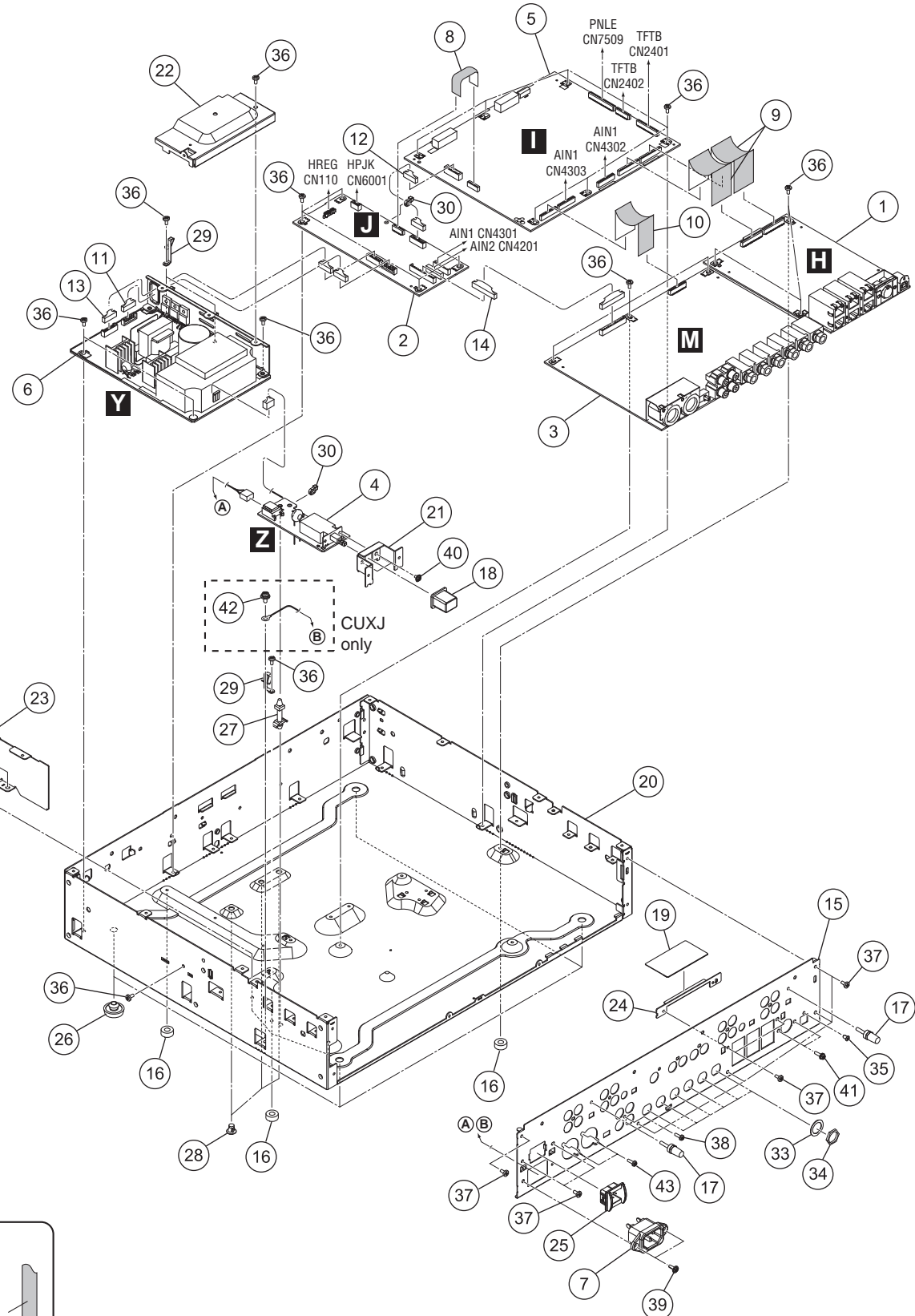
Mark No.	Description	Part No.	Mark No.	Description	Part No.
1	AIN1 Assy	DWX2922	26	Rotary SW Knob S (C)	DAA1204
2	AIN2 Assy	DWX2923	27	Knob/RSW	DAA1308
3	TRIM1 Assy	DWX2935	28	Side Panel L	DNK5363
4	TRIM2 Assy	DWX2936	29	Side Panel R	DNK5364
5	TRIM3 Assy	DWX2937	30	Front Panel	DNK6141
6	TRIM4 Assy	DWX2938	31	Binder	ZCA-SKB90BK
7	HPJK Assy	DWX3421	NSP 32	Label	See Contrast table (2)
8	HREG Assy	DWX3423	NSP 33	Caution Label	See Contrast table (2)
9	MCJK Assy	DWX2934	34	•••••	
10	20P FFC	DDD1510	35	•••••	
11	Connector Assy	PF04PP-D20	36	Flange Nut M9	DBN1008
12	Connector Assy	PF07EE-D10	37	Flange Nut M7	DBN1011
13	Connector Assy	PF07EE0D12	38	Nut M12	DBN1018
14	Plug/Pin	DKM1024	39	Screw	BBZ30P060FTB
15	Rivet (Plastic)	AEC1877	40	Screw	BBZ30P060FTC
16	Spring/VI4	DBH1788	41	Screw	BCZ40P060FTB
17	Trim Stay	DNF1813	42	Screw	BPZ30P080FTB
18	Input Stay	DNF1819	43	Screw	BPZ30P100FTB
19	HP Stay	DNF1820	44	Screw	BSZ40P220FTB
20	Heatsink	DNF1850	45	Screw	CCZ30P080FTB
21	Extension Shaft A	DNK5365			
22	Extension Shaft B	DNK5366			
23	Locking Mini Clamp	DEC2439			
24	Barrier (W)	DEC3271			
25	Push Rivet	XEC3034			

(2) CONTRAST TABLE

DJM-2000NXS/CUXJ, SYXJ8, LXJ, KXJ5 and XJCN5 are constructed the same except for the following:

Mark	No.	Symbol and Description	DJM-2000NXS /CUXJ	DJM-2000NXS /SYXJ8	DJM-2000NXS /LXJ	DJM-2000NXS /KXJ5	DJM-2000NXS /XJCN5
NSP	32	Label	DRW1975	Not used	Not used	Not used	Not used
NSP	33	Caution Label	DRW2429	Not used	DRW2430	Not used	Not used

9.3 BOTTOM SECTION



(1) BOTTOM SECTION PARTS LIST

Mark No.	Description	Part No.	Mark No.	Description	Part No.
1	PCIF Assy	DWX2925	21	Bracket PSW	DNF1759
2	HAMP Assy	DWX3422	22	Power Shield	DNF1815
3	AOUT Assy	DWX3420	23	AC Shield	DNF1816
4	ACSW Assy	DWX2918	24	Earth Plate	DNF1858
5	MAIN Assy	DWX3424	25	Power Knob Guard	DNK4534
⚠	6 POWER SUPPLY Assy	DWR1492	26	Foot (Rubber)	REC-434
⚠	7 AC Inlet Assy	See Contrast table (2)	NSP 27	PC Support	VEC1584
8	12P FFC	DDD1507	NSP 28	PC Support	VEC1749
9	26P FFC	DDD1509	29	Cord Clamper (Steel)	RNH-184
10	20P FFC	DDD1510	30	Binder	ZCA-SKB90BK
11	Connector Assy	PF06EE-D20	31	•••••	
12	Connector Assy	PF08PP-D10	32	•••••	
13	Connector Assy	PF08PP-D20	33	Washer	DEC2920
14	Connector Assy	PF12EE-D10	34	Nut (M12)	NKX2FNI
15	Rear Panel	See Contrast table (2)	35	Screw (M3*5)	DBA1340
NSP 16	Spacer	AEB7092	36	Screw	BBZ30P060FTC
17	Terminal Screw	AKE-031	37	Screw	BBZ30P060FTB
18	Power Knob	DAC2306	38	Screw	BPZ30P080FTB
19	Barrier (LAN)	DEC3169	39	Screw	IBZ30P080FTB
NSP 20	Chassis	DNA1362	40	Screw	IMZ30P040FTC
			41	Screw	PMH30P100FTB
			42	Screw	See Contrast table (2)
			43	Screw	PPZ30P080FTB

(2) CONTRAST TABLE

DJM-2000NXS/CUXJ, SYXJ8, LXJ, KXJ5 and XJCN5 are constructed the same except for the following:

Mark	No.	Symbol and Description	DJM-2000NXS /CUXJ	DJM-2000NXS /SYXJ8	DJM-2000NXS /LXJ	DJM-2000NXS /KXJ5	DJM-2000NXS /XJCN5
⚠	7	AC Inlet Assy/3P	DKP3927	Not used	Not used	Not used	Not used
⚠	7	AC Inlet Assy/2P	Not used	DKP3762	DKP3762	DKP3762	DKP3762
	15	Rear Panel	DNC2091	DNC2091	DNC2091	DNC2091	DNC2091
	42	Screw	PMH40P080FTC	Not used	Not used	Not used	Not used

9.4 CONTROL PANEL SECTION (1/2)

A

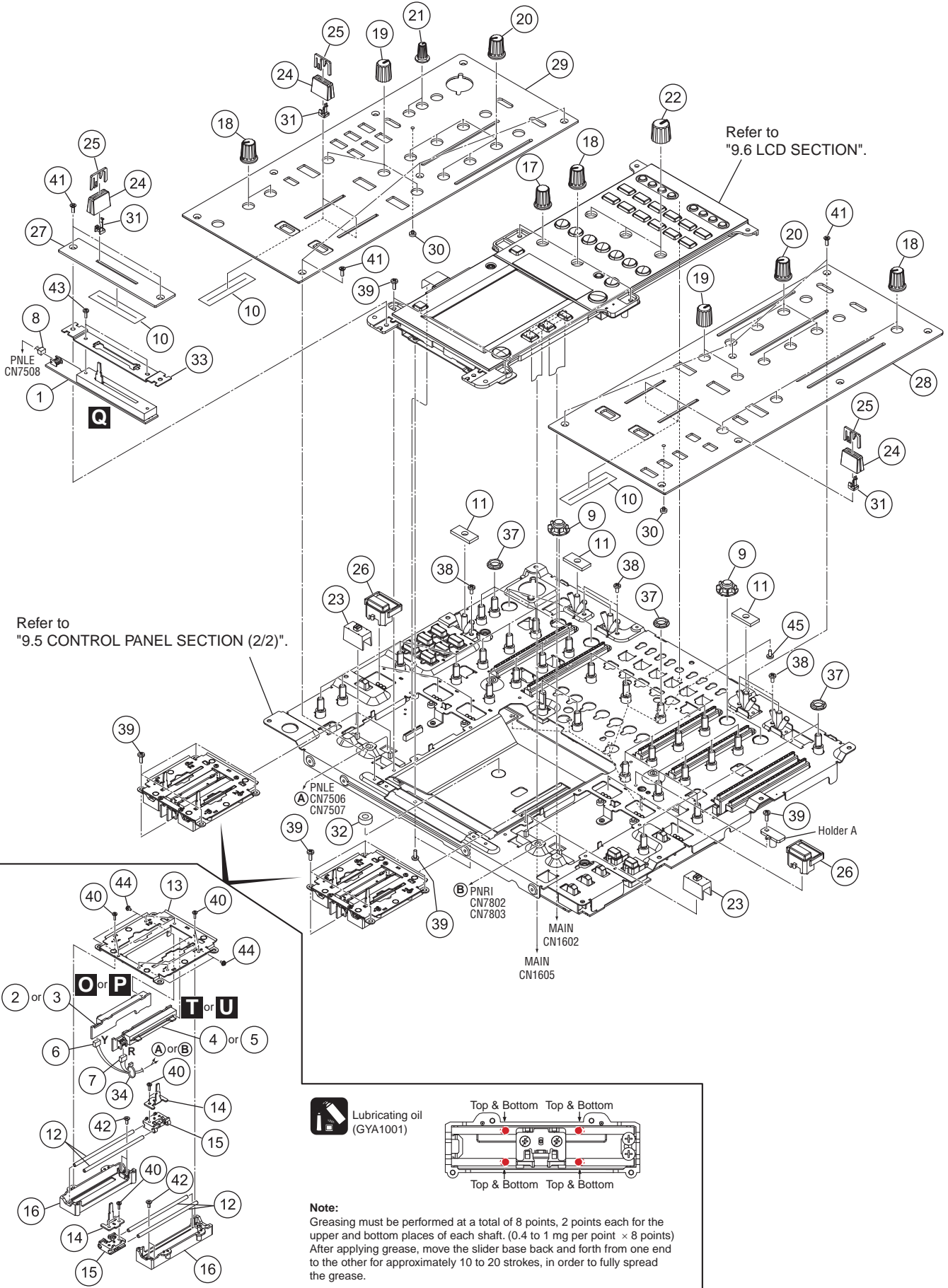
B

C

D

E

F

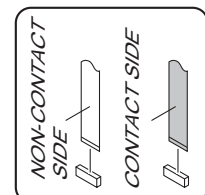
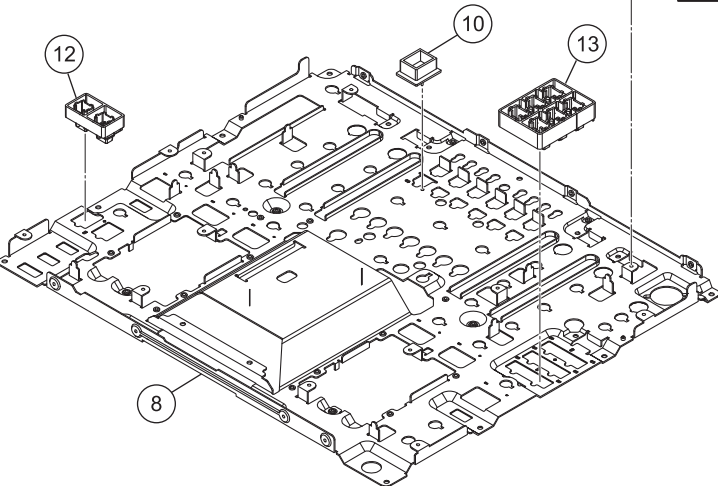
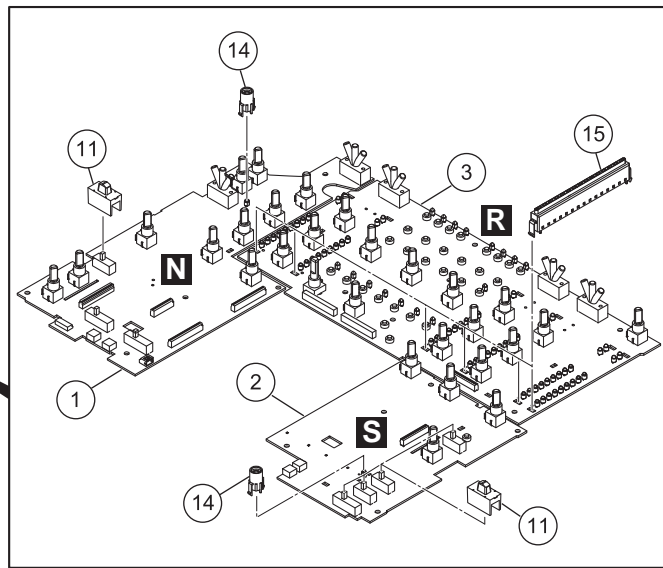
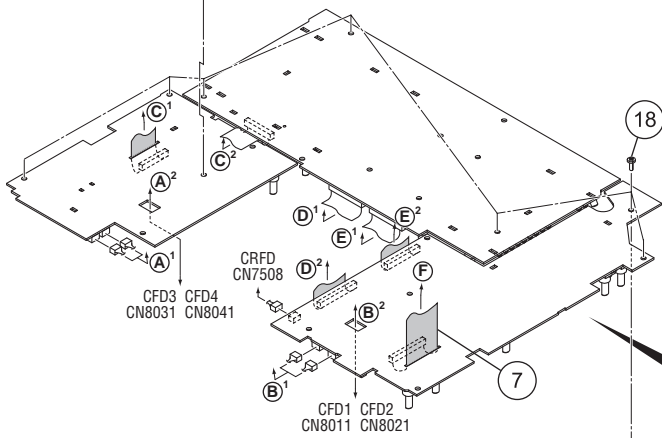
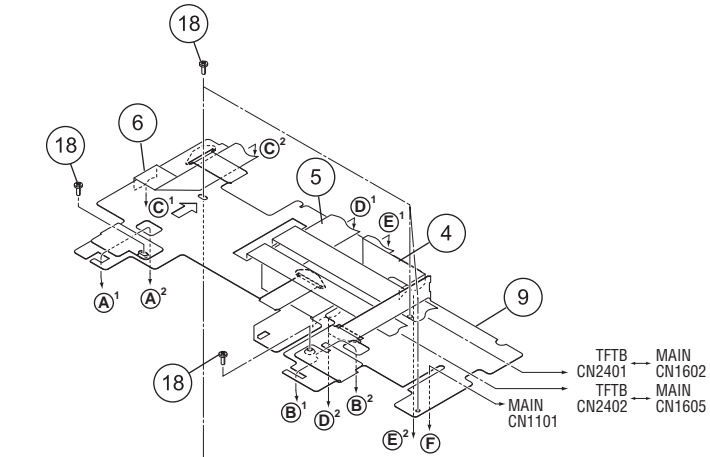


CONTROL PANEL SECTION (1/2) PARTS LIST

<u>Mark No.</u>	<u>Description</u>	<u>Part No.</u>	
	1 CRFD Assy	DWX3415	
	2 CFD1 Assy	DWX3416	A
	3 CFD2 Assy	DWX3417	
	4 CFD3 Assy	DWX3418	
	5 CFD4 Assy	DWX3419	
	6 Connector Assy	PF03PP2B12	
	7 Connector Assy	PF03PP4B12	
	8 Connector Assy	PF03PP-B10	
	9 Bush	DNK5367	
	10 Fader Packing	DEC2903	
	11 SW Packing	DED1177	B
NSP	12 Guide Shaft (S)	DLA1918	
	13 Stay/CHF	DNF1925	
	14 Lever Plate	DNH2954	
	15 Slider Base	DNK5851	
	16 Shaft Holder	DNK5852	
	17 Rotary SW Knob (C)	DAA1180	
	18 Rotary Knob (BN)	DAA1220	
	19 Knob (RES)	DAA1250	
	20 Knob/RSW	DAA1305	C
	21 Knob/RSW	DAA1307	
	22 Knob/FRE	DAA1309	
	23 Slide SW Cap (W)	DAC2401	
	24 Slider Knob 1	DAC2684	
	25 Slider Knob 2	DAC2685	
	26 Button/CUE	DAC2882	
	27 Panel/CRF	DAH2913	
	28 Control Panel R	DNB1205	
	29 Control Panel L	DNB1206	D
	30 Lens	DNK4532	
	31 Slider Knob Stopper	DNK5888	
NSP	32 Spacer	AEB7092	
	33 CRF Stay	DNF1855	
	34 Binder	ZCA-SKB90BK	
	35 •••••		
	36 •••••		
	37 Flange Nut M9	DBN1008	
	38 Screw	AMZ26P040FTC	E
	39 Screw	BBZ30P060FTC	
	40 Screw	BPZ20P060FTC	
	41 Screw	CCZ30P080FTB	
	42 Screw	CPZ26P080FTC	
	43 Screw	IMZ30P040FTC	
	44 Screw	PMH20P040FTC	
	45 Screw	BPZ30P080FTB	F

9.5 CONTROL PANEL SECTION (2/2)

A • Bottom view



CONTROL PANEL SECTION (2/2) PARTS LIST

Mark No.	Description	Part No.
1	PNLE Assy	DWX3413
2	PNRI Assy	DWX3414
3	PNCE Assy	DWX3426
4	32P FFC	DDD1504
5	32P FFC	DDD1505
6	25P FFC	DDD1506
7	32P FFC	DDD1508
NSP 8	Panel Stay	DND1274
9	Barrier/PNL	DMR1012
10	Light Shield	DNK5583
11	Slide SW Cap	DAC2400
12	Button (MIDI)	DAC2511
13	Button/CFX	DAC2889
14	Lens Holder	DNK4533
15	Lebel Meter Assy	DXB1882
16	
17	
18	Screw	BBZ30P060FTC

A

B

C

D

E

F

9.6 LCD SECTION

1

2

3

4

A • Bottom view

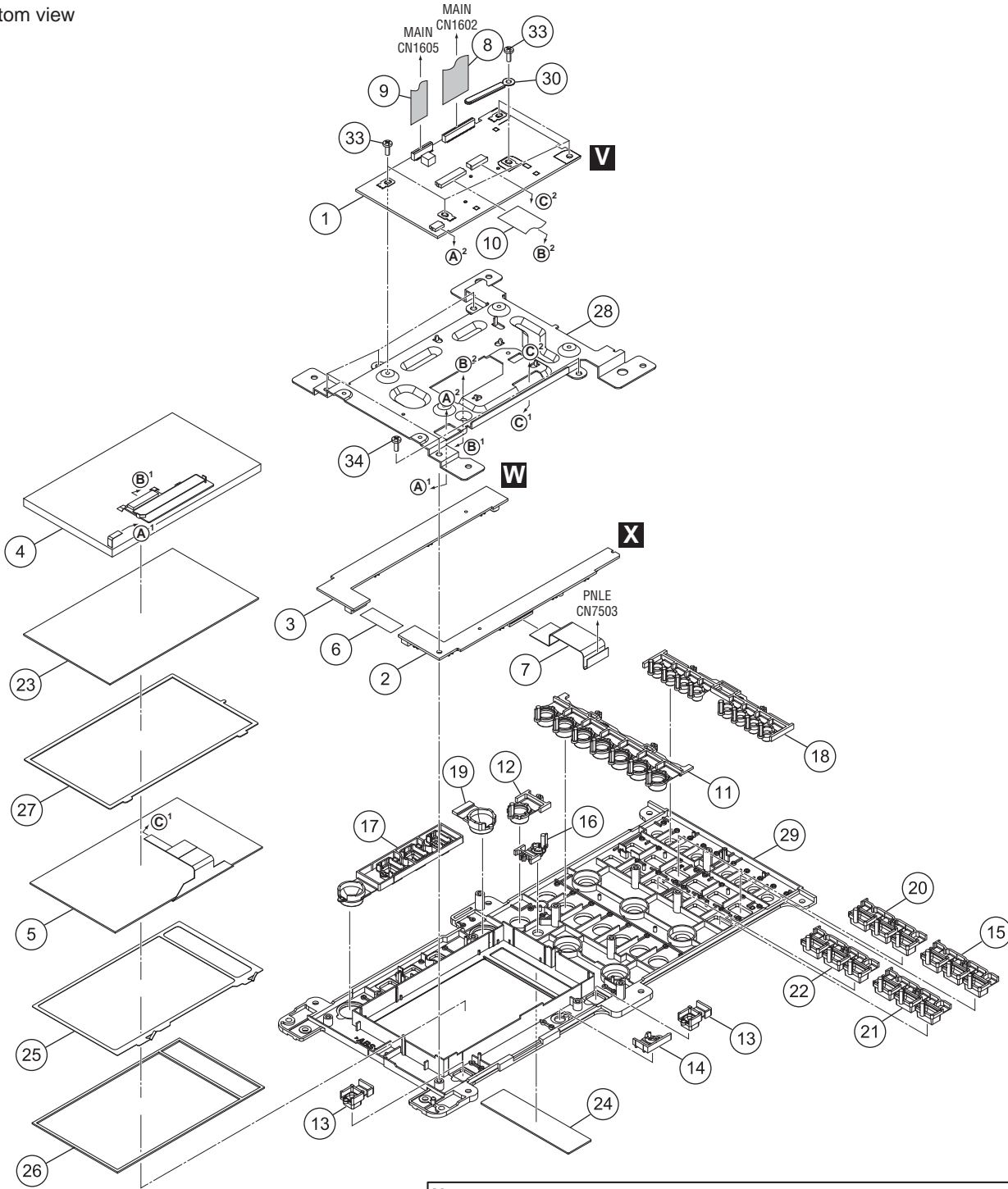
B

C

D

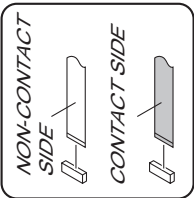
E

F



Note:
 The shape of the groups of buttons 15, 20, 21, and 22 is the same. To identify the attachment position of each group of buttons during reassembly, the initial letter of the name of the left button of a group is engraved on the back of the Center panel (No. 29).

• Bottom view



1

2

3

4

LCD SECTION PARTS LIST

Mark No.	Description	Part No.	
1	TFTB Assy	DWX2921	
2	TPLE Assy	DWX3010	A
3	TPRI Assy	DWX3011	
4	LCD	CWX3868	
5	Touch Panel	DSX1085	
6	12P FFC	DDD1507	
7	19P FFC	DDD1513	
8	26P FFC	DDD1514	
9	16P FFC	DDD1515	
10	40P FFC	DDD1541	
11	Button/BEAT	DAC2881	B
12	Button/TAP	DAC2883	
13	Button/CUES	DAC2884	
14	Button (SETTING)	DAC2506	
15	Button/FXA	DAC2886	
16	Button (AUTO)	DAC2508	
17	Button/REMIX	DAC2888	
18	Button/SEL	DAC2891	
19	Button (FX)	DAC2513	
20	Button/FXB	DAC2893	C
21	Button/FXC	DAC2894	
22	Button/FXD	DAC2895	
23	Protect Plate	DAH2767	
24	Display Plate (PC)	DAH2768	
25	TFT Earth Spring	DBK1367	
26	Touch Panel Pad	DEC3168	
27	Touch Panel Spacer	DEC3269	
28	LCD Stay	DNF1818	
29	Center Panel	DNK6140	D
30	Cord Clamper (Steel)	RNH-184	
31		
32		
33	Screw	BBZ30P060FTC	
34	Screw	BPZ30P080FTB	