

Ref. No.	Part No.	Part Name	Remarks
R313-316	247 2003 947	Carbon chip 22ohm 1/16W	RM73B--220J
R317	247 0003 949	Carbon chip 22ohm 1/10W	RM73B--220J
R318	247 2003 947	Carbon chip 22ohm 1/16W	RM73B--220J
R319-322	247 0009 985	Carbon chip 10kohm 1/10W	RM73B--103J
R323	247 0003 978	Carbon chip 30ohm 1/10W	RM73B--300J
R324	247 0003 949	Carbon chip 22ohm 1/10W	RM73B--220J
R325,326	247 0018 905	Carbon chip 0ohm 1/10W	RM73B--0R0K
R327-330	247 0003 949	Carbon chip 22ohm 1/10W	RM73B--220J
R331	247 0018 905	Carbon chip 0ohm 1/10W	RM73B--0R0K
R332,333	247 0018 905	Carbon chip 0ohm 1/10W	RM73B--0R0K
R334	247 0009 927	Carbon chip 5.6kohm 1/10W	RM73B--562J
R335	247 0009 985	Carbon chip 10kohm 1/10W	RM73B--103J
R337,338	247 0009 985	Carbon chip 10kohm 1/10W	RM73B--103J
R343	247 0018 905	Carbon chip 0ohm 1/10W	RM73B--0R0K
R345,346	247 0009 985	Carbon chip 10kohm 1/10W	RM73B--103J
R348	247 0007 987	Carbon chip 1.5kohm 1/10W	RM73B--152J
R349	247 0004 922	Carbon chip 47ohm 1/10W	RM73B--470J
R350	247 0018 905	Carbon chip 0ohm 1/10W	RM73B--0R0K
R351	247 0003 949	Carbon chip 22ohm 1/10W	RM73B--220J
R355	247 0004 922	Carbon chip 47ohm 1/10W	RM73B--470J
R356	247 0009 998	Carbon chip 11kohm 1/10W	RM73B--113J
R357	247 0005 905	Carbon chip 100ohm 1/10W	RM73B--101J
R358	247 0013 939	Carbon chip 300kohm 1/10W	RM73B--304J
R359	247 0004 922	Carbon chip 47ohm 1/10W	RM73B--470J
R360,361	247 0003 949	Carbon chip 22ohm 1/10W	RM73B--220J
R363	247 0004 922	Carbon chip 47ohm 1/10W	RM73B--470J
R367	247 0012 914	Carbon chip 91kohm 1/10W	RM73B--913J
R369	247 0005 905	Carbon chip 100ohm 1/10W	RM73B--101J
R370	247 0013 939	Carbon chip 300kohm 1/10W	RM73B--304J
R373	247 0005 905	Carbon chip 100ohm 1/10W	RM73B--101J
R374	247 0018 905	Carbon chip 0ohm 1/10W	RM73B--0R0K
R378	247 0018 905	Carbon chip 0ohm 1/10W	RM73B--0R0K
R401,402	247 0010 990	Carbon chip 30kohm 1/10W	RM73B--303J
R403-406	247 0009 969	Carbon chip 8.2kohm 1/10W	RM73B--822J
R407-410	247 0008 902	Carbon chip 1.8kohm 1/10W	RM73B--182J
R411-414	247 0008 986	Carbon chip 3.9kohm 1/10W	RM73B--392J
R415-419	247 0018 905	Carbon chip 0ohm 1/10W	RM73B--0R0K
R421,422	247 0010 990	Carbon chip 30kohm 1/10W	RM73B--303J
R423-426	247 0009 969	Carbon chip 8.2kohm 1/10W	RM73B--822J
R427-430	247 0008 902	Carbon chip 1.8kohm 1/10W	RM73B--182J
R431-434	247 0008 986	Carbon chip 3.9kohm 1/10W	RM73B--392J
R435-439	247 0018 905	Carbon chip 0ohm 1/10W	RM73B--0R0K
R441,442	247 0005 947	Carbon chip 150ohm 1/10W	RM73B--151J
R443,444	247 0009 985	Carbon chip 10kohm 1/10W	RM73B--103J
R450	247 0004 922	Carbon chip 47ohm 1/10W	RM73B--470J
R451	247 2003 947	Carbon chip 22ohm 1/16W	RM73B--220J
R452	247 0018 905	Carbon chip 0ohm 1/10W	RM73B--0R0K
R453	247 0004 922	Carbon chip 47ohm 1/10W	RM73B--470J
R454	247 0003 949	Carbon chip 22ohm 1/10W	RM73B--220J
R455-475	247 2003 947	Carbon chip 22ohm 1/16W	RM73B--220J
R476	247 0005 905	Carbon chip 100ohm 1/10W	RM73B--101J

Ref. No.	Part No.	Part Name	Remarks
R484,485	247 0004 922	Carbon chip 47ohm 1/10W	RM73B--470J
R486	247 0018 905	Carbon chip 0ohm 1/10W	RM73B--0R0K
R488-509	247 2003 947	Carbon chip 22ohm 1/16W	RM73B--220J
R510	247 0018 905	Carbon chip 0ohm 1/10W	RM73B--0R0K
R511,512	247 0005 989	Carbon chip 220ohm 1/10W	RM73B--221J
R513,514	247 0009 914	Carbon chip 5.1kohm 1/10W	RM73B--512J
R515-518	247 0009 972	Carbon chip 9.1kohm 1/10W	RM73B--912J
R519,520	247 0009 985	Carbon chip 10kohm 1/10W	RM73B--103J
R521,522	247 0010 974	Carbon chip 24kohm 1/10W	RM73B--243J
R523,524	247 0010 990	Carbon chip 30kohm 1/10W	RM73B--303J
R525,526	247 0018 905	Carbon chip 0ohm 1/10W	RM73B--0R0K
R531	247 0012 985	Carbon chip 180kohm 1/10W	RM73B--184J
R532	247 0008 931	Carbon chip 2.4kohm 1/10W	RM73B--242J
R533	247 0009 914	Carbon chip 5.1kohm 1/10W	RM73B--512J
R534	247 0018 905	Carbon chip 0ohm 1/10W	RM73B--0R0K
R536-538	247 0018 905	Carbon chip 0ohm 1/10W	RM73B--0R0K

CAPACITORS GROUP

Ref. No.	Part No.	Part Name	Remarks
C103	254 4299 964	Electrolytic 47µF/16V	CE04W1C470M (SRE)
C104	257 0014 935	Ceramic chip 0.1µF/25V	CK73F1E104Z
C105	254 4302 974	Electrolytic 100µF/10V	CE04W1A101M (SRE)
C106	257 0014 935	Ceramic chip 0.1µF/25V	CK73F1E104Z
C109	257 3006 911	Metallized chip 0.1µF/16V	CF73=1C104J (ECHU)
C110	254 4299 964	Electrolytic 47µF/16V	CE04W1C470M (SRE)
C111	254 4305 968	Electrolytic 1µF/50V	CE04W1H010M (SRE)
C112	254 4299 964	Electrolytic 47µF/16V	CE04W1C470M (SRE)
C113	257 3006 924	Metallized chip 0.01µF/16V	CF73=1C103J (ECHU)
C114	257 3010 923	Metallized chip 150pF/50V	CF73=1H151J (ECHU)
C115	257 3010 952	Metallized chip 270pF/50V	CF73=1H271J (ECHU)
C116,117	257 3006 911	Metallized chip 0.1µF/16V	CF73=1C104J (ECHU)
C118	257 0001 948	Ceramic chip 2.0 pF/50V	CC73SL1H2R0C
C119	254 4305 968	Electrolytic 1µF/50V	CE04W1H010M (SRE)
C120	257 3010 907	Metallized chip 100pF/50V	CF73=1H101J (ECHU)
C121	257 3014 990	Metallized chip 0.027µF/16V	CF73=1C273J (ECHU)
C122	257 3011 948	Metallized chip 2200pF/50V	CF73=1H222J (ECHU)
C123	257 0002 921	Ceramic chip 10 pF/50V	CC73SL1H100D
C124	256 1059 912	Metallized 0.22µF/50V	CF93A1H224J (JL)
C125	255 1265 923	Mylar film 8200pF/50V	CQ93M1H822J (B)
C127	257 3006 924	Metallized chip 0.01µF/16V	CF73=1C103J (ECHU)
C128	257 3011 948	Metallized chip 2200pF/50V	CF73=1H222J (ECHU)
C130	257 3006 911	Metallized chip 0.1µF/16V	CF73=1C104J (ECHU)
C131	257 3015 928	Metallized chip 0.047µF/16V	CF73=1C473J (ECHU)
C132	257 3014 929	Metallized chip 4700pF/16V	CF73=1C472J (ECHU)
C133	257 3006 924	Metallized chip 0.01µF/16V	CF73=1C103J (ECHU)
C134	254 4213 940	Electrolytic 220µF/6.3V	CE04W0J221M (SRA)
C135	255 1264 982	Mylar film 4700pF/50V	CQ93M1H472J (B)
C136	257 3010 949	Metallized chip 220pF/50V	CF73=1H221J (ECHU)
C137	257 0014 935	Ceramic chip 0.1µF/25V	CK73F1E104Z
C138,139	254 4302 974	Electrolytic 100µF/10V	CE04W1A101M (SRE)
C140	255 1264 924	Mylar film 1500pF/50V	CQ93M1H152J (B)
C141	253 9030 976	Ceramic 0.015µF/25V	CK45=1E153K

Ref. No.	Part No.	Part Name	Remarks	Ref. No.	Part No.	Part Name	Remarks
C142	257 0014 935	Ceramic chip 0.1μF/25V	CK73F1E104Z	C267,268	257 0007 900	Ceramic chip 1000pF/50V	CC73SL1H102J
C143	257 3010 994	Metallized chip 560pF/50V	CF73=1H561J (ECHU)	C282	257 0012 966	Ceramic chip 0.01μF/50V	CK73F1H103Z
C144	257 3006 924	Metallized chip 0.01μF/16V	CF73=1C103J (ECHU)	C283	257 0008 983	Ceramic chip 1000pF/50V	CK73B1H102K
C145	254 4299 964	Electrolytic 47μF/16V	CE04W1C470M (SRE)	C289	257 0008 983	Ceramic chip 1000pF/50V	CK73B1H102K
C146	257 3006 924	Metallized chip 0.01μF/16V	CF73=1C103J (ECHU)	C290	257 0012 966	Ceramic chip 0.01μF/50V	CK73F1H103Z
C148,149	255 1265 978	Mylar film 0.022μF/50V	CQ93M1H223J (B)	C291	257 0014 935	Ceramic chip 0.1μF/25V	CK73F1E104Z
C150	256 1058 971	Metallized 0.1μF/50V	CF93A1H104J (JL)	C292	257 0008 983	Ceramic chip 1000pF/50V	CK73B1H102K
C151	256 1059 938	Metallized 0.33μF/50V	CF93A1H334J (JL)	C293	257 0012 966	Ceramic chip 0.01μF/50V	CK73F1H103Z
C152	254 4302 974	Electrolytic 100μF/10V	CE04W1A101M (SRE)	C294	257 0014 935	Ceramic chip 0.1μF/25V	CK73F1E104Z
C153,154	257 0014 935	Ceramic chip 0.1μF/25V	CK73F1E104Z				
C156,157	257 0001 977	Ceramic chip 5.0 pF/50V	CC73SL1H5R0C	C301	254 4300 989	Electrolytic 330μF/6.3V	CE04W0J331M (SRE)
C158	254 4299 964	Electrolytic 47μF/16V	CE04W1C470M (SRE)	C302	257 0012 966	Ceramic chip 0.01μF/50V	CK73F1H103Z
C159	257 0012 966	Ceramic chip 0.01μF/50V	CK73F1H103Z	C303	257 0008 983	Ceramic chip 1000pF/50V	CK73B1H102K
C162	257 0012 966	Ceramic chip 0.01μF/50V	CK73F1H103Z	C304	257 0007 900	Ceramic chip 1000pF/50V	CC73SL1H102J
C163	254 4302 974	Electrolytic 100μF/10V	CE04W1A101M (SRE)	C307	254 4299 964	Electrolytic 47μF/16V	CE04W1C470M (SRE)
C164	257 0012 966	Ceramic chip 0.01μF/50V	CK73F1H103Z	C308	257 0014 935	Ceramic chip 0.1μF/25V	CK73F1E104Z
C165	254 4299 964	Electrolytic 47μF/16V	CE04W1C470M (SRE)	C309	257 0012 966	Ceramic chip 0.01μF/50V	CK73F1H103Z
C166	257 0014 935	Ceramic chip 0.1μF/25V	CK73F1E104Z	C310,311	257 0002 947	Ceramic chip 12pF/50V	CC73SL1H120J
C167	257 0012 966	Ceramic chip 0.01μF/50V	CK73F1H103Z	C312	257 0014 935	Ceramic chip 0.1μF/25V	CK73F1E104Z
C168	257 0008 983	Ceramic chip 1000pF/50V	CK73B1H102K	C313	254 4300 989	Electrolytic 330μF/6.3V	CE04W0J331M (SRE)
C169	257 0004 961	Ceramic chip 100pF/50V	CC73SL1H101J	C314	257 0012 966	Ceramic chip 0.01μF/50V	CK73F1H103Z
C177	257 0002 947	Ceramic chip 12pF/50V	CC73SL1H120J	C315	254 4302 974	Electrolytic 100μF/10V	CE04W1A101M (SRE)
C192	257 0012 966	Ceramic chip 0.01μF/50V	CK73F1H103Z	C317	254 4300 989	Electrolytic 330μF/6.3V	CE04W0J331M (SRE)
C193	257 0008 983	Ceramic chip 1000pF/50V	CK73B1H102K	C318	257 0014 935	Ceramic chip 0.1μF/25V	CK73F1E104Z
C194	257 0012 966	Ceramic chip 0.01μF/50V	CK73F1H103Z	C322	257 0014 935	Ceramic chip 0.1μF/25V	CK73F1E104Z
C195	257 0008 983	Ceramic chip 1000pF/50V	CK73B1H102K	C323	254 4302 974	Electrolytic 100μF/10V	CE04W1A101M (SRE)
C196-198	257 0012 966	Ceramic chip 0.01μF/50V	CK73F1H103Z	C324	257 0012 966	Ceramic chip 0.01μF/50V	CK73F1H103Z
C199	257 0008 983	Ceramic chip 1000pF/50V	CK73B1H102K	C326	254 4305 955	Electrolytic 0.68μF/50V	CE04W1HR68M (SRE)
				C328	257 0004 961	Ceramic chip 100pF/50V	CC73SL1H101J
C201	257 0014 935	Ceramic chip 0.1μF/25V	CK73F1E104Z	C329	254 4300 989	Electrolytic 330μF/6.3V	CE04W0J331M (SRE)
C202	254 4299 964	Electrolytic 47μF/16V	CE04W1C470M (SRE)	C330	257 0012 966	Ceramic chip 0.01μF/50V	CK73F1H103Z
C203	257 0012 966	Ceramic chip 0.01μF/50V	CK73F1H103Z	C331	257 0014 935	Ceramic chip 0.1μF/25V	CK73F1E104Z
C204,205	257 0002 963	Ceramic chip 15pF/50V	CC73SL1H150J	C333	257 0004 961	Ceramic chip 100pF/50V	CC73SL1H101J
C206	257 0007 900	Ceramic chip 1000pF/50V	CC73SL1H102J	C334	257 0012 966	Ceramic chip 0.01μF/50V	CK73F1H103Z
C207	257 0012 966	Ceramic chip 0.01μF/50V	CK73F1H103Z	C335	257 0007 900	Ceramic chip 1000pF/50V	CC73SL1H102J
C208	254 4302 974	Electrolytic 100μF/10V	CE04W1A101M (SRE)	C336,337	257 0014 935	Ceramic chip 0.1μF/25V	CK73F1E104Z
C209	257 3006 924	Metallized chip 0.01μF/16V	CF73=1C103J (ECHU)	C338	254 4305 955	Electrolytic 0.68μF/50V	CE04W1HR68M (SRE)
C225	254 3068 918	Electrolytic 2.2μF/50V	CE04D1H2R2MBP (SRA)	C340	257 0014 935	Ceramic chip 0.1μF/25V	CK73F1E104Z
C237	257 3010 949	Metallized chip 220pF/50V	CF73=1H221J (ECHU)	C344	254 4299 964	Electrolytic 47μF/16V	CE04W1C470M (SRE)
C240	257 0008 983	Ceramic chip 1000pF/50V	CK73B1H102K	C345	257 0008 983	Ceramic chip 1000pF/50V	CK73B1H102K
C242,243	257 0008 983	Ceramic chip 1000pF/50V	CK73B1H102K	C346	257 0012 966	Ceramic chip 0.01μF/50V	CK73F1H103Z
C244	257 0012 966	Ceramic chip 0.01μF/50V	CK73F1H103Z	C347	257 0014 935	Ceramic chip 0.1μF/25V	CK73F1E104Z
C245	257 0008 983	Ceramic chip 1000pF/50V	CK73B1H102K	C348	257 0012 966	Ceramic chip 0.01μF/50V	CK73F1H103Z
C251-253	257 0014 935	Ceramic chip 0.1μF/25V	CK73F1E104Z				
C254	254 4299 964	Electrolytic 47μF/16V	CE04W1C470M (SRE)	C401,402	254 4299 906	Electrolytic 10μF/16V	CE04W1C100M (SRE)
C255,256	257 0012 966	Ceramic chip 0.01μF/50V	CK73F1H103Z	C403-406	257 0005 944	Ceramic chip 220pF/50V	CC73SL1H221J
C257	257 0014 935	Ceramic chip 0.1μF/25V	CK73F1E104Z	C407,408	257 0004 961	Ceramic chip 100pF/50V	CC73SL1H101J
C258	254 4533 950	Electrolytic 470μF/6.3V	CE04W0J471M	C409,410	254 4299 964	Electrolytic 47μF/16V	CE04W1C470M (SRE)
C259,260	257 0012 966	Ceramic chip 0.01μF/50V	CK73F1H103Z	C411,412	257 0014 935	Ceramic chip 0.1μF/25V	CK73F1E104Z
C261	257 0014 935	Ceramic chip 0.1μF/25V	CK73F1E104Z	C413,414	254 4299 906	Electrolytic 10μF/16V	CE04W1C100M (SRE)
C262	254 4299 964	Electrolytic 47μF/16V	CE04W1C470M (SRE)	C415-418	257 0005 944	Ceramic chip 220pF/50V	CC73SL1H221J
C263-266	257 0012 966	Ceramic chip 0.01μF/50V	CK73F1H103Z	C419,420	257 0004 961	Ceramic chip 100pF/50V	CC73SL1H101J

Ref. No.	Part No.	Part Name	Remarks	Ref. No.	Part No.	Part Name	Remarks
C421,422	254 4299 964	Electrolytic 47μF/16V	CE04W1C470M (SRE)	C489	254 4299 964	Electrolytic 47μF/16V	CE04W1C470M (SRE)
C423,424	257 0014 935	Ceramic chip 0.1μF/25V	CK73F1E104Z	C490	257 0012 966	Ceramic chip 0.01μF/50V	CK73F1H103Z
C425,426	254 4299 964	Electrolytic 47μF/16V	CE04W1C470M (SRE)	C491,492	257 0014 935	Ceramic chip 0.1μF/25V	CK73F1E104Z
C427,428	257 0004 961	Ceramic chip 100pF/50V	CC73SL1H101J	C493-498	257 0012 966	Ceramic chip 0.01μF/50V	CK73F1H103Z
C429,430	257 0007 900	Ceramic chip 1000pF/50V	CC73SL1H102J	C499,500	257 0014 935	Ceramic chip 0.1μF/25V	CK73F1E104Z
C431	254 4302 974	Electrolytic 100μF/10V	CE04W1A101M (SRE)	C503,504	257 0004 961	Ceramic chip 100pF/50V	CC73SL1H101J
C432,433	257 0014 935	Ceramic chip 0.1μF/25V	CK73F1E104Z	C505,506	254 4299 906	Electrolytic 10μF/16V	CE04W1C100M (SRE)
C434	254 4305 968	Electrolytic 1μF/50V	CE04W1H010M (SRE)	C507,508	257 0014 935	Ceramic chip 0.1μF/25V	CK73F1E104Z
C435	254 4299 919	Electrolytic 22μF/16V	CE04W1C220M (SRE)	C509,510	254 4302 974	Electrolytic 100μF/10V	CE04W1A101M (SRE)
C436	257 0014 935	Ceramic chip 0.1μF/25V	CK73F1E104Z	C511	257 0012 966	Ceramic chip 0.01μF/50V	CK73F1H103Z
C437	254 4299 919	Electrolytic 22μF/16V	CE04W1C220M (SRE)	C512,513	257 0014 935	Ceramic chip 0.1μF/25V	CK73F1E104Z
C440	254 4302 974	Electrolytic 100μF/10V	CE04W1A101M (SRE)	C514,515	257 0012 966	Ceramic chip 0.01μF/50V	CK73F1H103Z
C441	257 0014 935	Ceramic chip 0.1μF/25V	CK73F1E104Z	C516	257 0008 983	Ceramic chip 1000pF/50V	CK73B1H102K
C442	257 0007 900	Ceramic chip 1000pF/50V	CC73SL1H102J	C521	257 0006 901	Ceramic chip 390pF/50V	CC73SL1H391J
C443,444	257 0004 961	Ceramic chip 100pF/50V	CC73SL1H101J	C522	254 4300 989	Electrolytic 330μF/6.3V	CE04W0J331M (SRE)
C445,446	257 0012 966	Ceramic chip 0.01μF/50V	CK73F1H103Z	OTHER PARTS GROUP			
C447	257 0007 900	Ceramic chip 1000pF/50V	CC73SL1H102J	AS201	205 0488 036	32P IC socket	Q'ty 1
C448	257 0012 966	Ceramic chip 0.01μF/50V	CK73F1H103Z	CX051	205 0343 058	5P connector base(KR-PH)	1
C449	254 4299 964	Electrolytic 47μF/16V	CE04W1C470M (SRE)	CX052	205 0321 054	5P connector base (RED)	1
C450	257 0014 935	Ceramic chip 0.1μF/25V	CK73F1E104Z	CX061	205 0321 067	6P connector base (RED)	1
C451	257 0012 966	Ceramic chip 0.01μF/50V	CK73F1H103Z	CX081	205 0395 080	8P connector base (RED) L	1
C452	254 4299 964	Electrolytic 47μF/16V	CE04W1C470M (SRE)	CX083	205 0343 087	8P connector base (KR-PH)	1
C453	257 0014 935	Ceramic chip 0.1μF/25V	CK73F1E104Z	CX271	205 1138 000	27P FFC connector base(SIDE)	1
C454	257 0012 966	Ceramic chip 0.01μF/50V	CK73F1H103Z	FB101	235 0049 900	Beads inductor	1
C455	254 4302 974	Electrolytic 100μF/10V	CE04W1A101M (SRE)	FB102	235 0106 908	EMI filter (21A05)	1
C456	257 0014 935	Ceramic chip 0.1μF/25V	CK73F1E104Z	FB104,105	235 0106 908	EMI filter (21A05)	2
C457,458	254 4299 919	Electrolytic 22μF/16V	CE04W1C220M (SRE)	FB125	235 0106 908	EMI filter (21A05)	1
C459	254 4305 968	Electrolytic 1μF/50V	CE04W1H010M (SRE)	FB126	235 0049 900	Beads inductor	1
C460,461	254 4299 919	Electrolytic 22μF/16V	CE04W1C220M (SRE)	FB201	235 0049 900	Beads inductor	1
C462	254 4302 974	Electrolytic 100μF/10V	CE04W1A101M (SRE)	FB251-260	235 0106 908	EMI filter (21A05)	10
C463	257 0014 935	Ceramic chip 0.1μF/25V	CK73F1E104Z	FB261,262	235 0086 905	EMI filter (101)	2
C464	257 0007 900	Ceramic chip 1000pF/50V	CC73SL1H102J	FB301	235 0106 908	EMI filter (21A05)	1
C465,466	257 0004 961	Ceramic chip 100pF/50V	CC73SL1H101J	FB303,304	235 0106 908	EMI filter (21A05)	2
C467,468	257 0012 966	Ceramic chip 0.01μF/50V	CK73F1H103Z	FB501,502	235 0049 900	Beads inductor	2
C469	257 0007 900	Ceramic chip 1000pF/50V	CC73SL1H102J	FB503	235 0106 908	EMI filter (21A05)	1
C470	257 0012 966	Ceramic chip 0.01μF/50V	CK73F1H103Z	JP101	205 0339 004	JM jumper connector	1
C471	254 4299 964	Electrolytic 47μF/16V	CE04W1C470M (SRE)	L101	235 0060 950	Inductor 10μH	1
C472	257 0014 935	Ceramic chip 0.1μF/25V	CK73F1E104Z	L401,402	235 0107 949	LEM4532T101M	2
C473	257 0012 966	Ceramic chip 0.01μF/50V	CK73F1H103Z	TP101	205 0343 061	6P connector base (KR-PH)	1
C474	254 4299 964	Electrolytic 47μF/16V	CE04W1C470M (SRE)	TP102	205 0343 032	3P connector base (KR-PH)	1
C475	257 0014 935	Ceramic chip 0.1μF/25V	CK73F1E104Z	X101	399 0594 005	Crystal 30MHz	1
C476	257 0012 966	Ceramic chip 0.01μF/50V	CK73F1H103Z	X201	399 0352 904	Ceramic resonator	CSA20.0MX2040-TP01 1
C477	254 4299 964	Electrolytic 47μF/16V	CE04W1C470M (SRE)	X301	399 0595 004	Crystal 8.4672MHz	1
C478	257 0014 935	Ceramic chip 0.1μF/25V	CK73F1E104Z		205 0341 018	3P RE header	for JP101 1
C479	257 0012 966	Ceramic chip 0.01μF/50V	CK73F1H103Z				
C480	254 4299 964	Electrolytic 47μF/16V	CE04W1C470M (SRE)				
C481	257 0014 935	Ceramic chip 0.1μF/25V	CK73F1E104Z				
C482	257 0012 966	Ceramic chip 0.01μF/50V	CK73F1H103Z				
C483,484	257 0014 935	Ceramic chip 0.1μF/25V	CK73F1E104Z				
C485	254 4299 964	Electrolytic 47μF/16V	CE04W1C470M (SRE)				
C486	257 0012 966	Ceramic chip 0.01μF/50V	CK73F1H103Z				
C487,488	257 0014 935	Ceramic chip 0.1μF/25V	CK73F1E104Z				

GU-3226 POWER P.W.B. UNIT ASS'Y

Ref. No.	Part No.	Part Name	Remarks
SEMICONDUCTORS GROUP			
IC601	262 2090 904	IC MAX202CSE	
IC602	262 1711 909	IC X24C00S	
IC603	262 1930 900	IC TC74AC08AF	
IC604	262 1647 905	IC MN1382-S(TX)	
IC607	263 1056 007	IC UPC2406AHF	
IC608,609	263 1043 007	IC UPC2405AHF	
IC610	263 1056 007	IC UPC2406AHF	
IC611-613	263 1043 007	IC UPC2405AHF	
IC614	263 0554 005	IC NJM7905FA	
IC701,702	262 1953 903	IC TC7WU04F	
TR601	272 0083 004	Transistor 2SB1185 (E/F)	
TR701-704	274 0160 907	Transistor 2SD2144STPU	
TR705	269 0083 901	Transistor DTA114EK	
TR706	269 0082 902	Transistor DTC114EK	
TR707	269 0083 901	Transistor DTA114EK	
TR708	269 0082 902	Transistor DTC114EK	
D601	276 0559 909	Diode DAP202K	
D602,603	276 0432 903	Diode 1SS270A	
D604,605	276 0623 000	Diode D3SBA20	
D610,611	276 0550 908	Diode 1SR139-200	
D612	276 0438 949	Diode MA151WK	
D613	276 0438 907	Diode MA151WA	
D614	276 0438 949	Diode MA151WK	
D615	276 0438 907	Diode MA151WA	
D616	276 0438 949	Diode MA151WK	
D617	276 0438 907	Diode MA151WA	
D701,702	276 0432 903	Diode 1SS270A	
ZD601	276 0643 967	Zener diode MTZJ4.3A	
ZD602	276 0646 906	Zener diode MTZJ39E	
LD801	393 9543 907	LED SLR-325VC	Red
LD802,803	393 9582 900	LED LNX901CFBDA	Blue
RESISTORS GROUP			
R601,602	247 0009 985	Carbon chip 10kohm 1/10W	RM73B--103J
R603	247 0005 905	Carbon chip 100ohm 1/10W	RM73B--101J
R606	247 0009 985	Carbon chip 10kohm 1/10W	RM73B--103J
R607	247 0005 989	Carbon chip 220ohm 1/10W	RM73B--221J
R608	247 0018 905	Carbon chip 0ohm 1/10W	RM73B--0R0K
R609-615	247 0009 985	Carbon chip 10kohm 1/10W	RM73B--103J
R617	247 0008 944	Carbon chip 2.7kohm 1/10W	RM73B--272J
R621-624	247 0007 945	Carbon chip 1kohm 1/10W	RM73B--102J
R701,702	247 0007 903	Carbon chip 680ohm 1/10W	RM73B--681J
R703,704	247 0008 944	Carbon chip 2.7kohm 1/10W	RM73B--272J

Ref. No.	Part No.	Part Name	Remarks
R705	247 0009 985	Carbon chip 10kohm 1/10W	RM73B--103J
R706	247 0012 998	Carbon chip 200kohm 1/10W	RM73B--204J
R707	244 2051 974	Metal oxide 1kohm 1W	RS14B3A102JNBS (S)
R709	247 0007 987	Carbon chip 1.5kohm 1/10W	RM73B--152J
R710	247 0014 967	Carbon chip 1Mohm 1/10W	RM73B--105J
R711	247 0004 977	Carbon chip 75ohm 1/10W	RM73B--750J
R713,714	247 0007 903	Carbon chip 680ohm 1/10W	RM73B--681J
R715,716	247 0008 944	Carbon chip 2.7kohm 1/10W	RM73B--272J
R717	247 0009 985	Carbon chip 10kohm 1/10W	RM73B--103J
R718	247 0012 998	Carbon chip 200kohm 1/10W	RM73B--204J
R719	244 2051 974	Metal oxide 1kohm 1W	RS14B3A102JNBS (S)
R721	247 0007 987	Carbon chip 1.5kohm 1/10W	RM73B--152J
R722	247 0014 967	Carbon chip 1Mohm 1/10W	RM73B--105J
R723	247 0004 977	Carbon chip 75ohm 1/10W	RM73B--750J
R727,728	247 0018 905	Carbon chip 0ohm 1/10W	RM73B--0R0K
R731,732	247 0018 905	Carbon chip 0ohm 1/10W	RM73B--0R0K
R741,742	247 0018 905	Carbon chip 0ohm 1/10W	RM73B--0R0K
R744	247 0018 905	Carbon chip 0ohm 1/10W	RM73B--0R0K
R747	247 0018 905	Carbon chip 0ohm 1/10W	RM73B--0R0K
R803,804	247 0006 904	Carbon chip 270ohm 1/10W	RM73B--271J
CAPACITORS GROUP			
C601	254 4536 931	Electrolytic 220μF/10V	CE04W1A221M (SMG/RE3)
C602-605	257 0014 935	Ceramic chip 0.1μF/25V	CK73F1E104Z
C606	254 4536 931	Electrolytic 220μF/10V	CE04W1A221M (SMG/RE3)
C607,608	257 0014 935	Ceramic chip 0.1μF/25V	CK73F1E104Z
C611	257 0012 966	Ceramic chip 0.01μF/50V	CK73F1H103Z
C613	257 0012 966	Ceramic chip 0.01μF/50V	CK73F1H103Z
C614	257 0008 983	Ceramic chip 1000pF/50V	CK73B1H102K
C615	254 4538 939	Electrolytic 47μF/16V	CE04W1C470M (SMG/RE3)
C616	257 3006 924	Metallized chip 0.01μF/16V	CF73-1C103J (ECHU)
C617	254 4535 929	Electrolytic 47μF/63V	CE04W1J470M (SMG/RE3)
C618	254 4540 707	Electrolytic 330μF/63V	CE04W1J331M (SMG/RE3)
C619-624	257 0014 935	Ceramic chip 0.1μF/25V	CK73F1E104Z
C626	257 0014 935	Ceramic chip 0.1μF/25V	CK73F1E104Z
C627	257 0012 966	Ceramic chip 0.01μF/50V	CK73F1H103Z
C629-632	257 0014 935	Ceramic chip 0.1μF/25V	CK73F1E104Z
C634	257 0014 935	Ceramic chip 0.1μF/25V	CK73F1E104Z
C635	257 0012 966	Ceramic chip 0.01μF/50V	CK73F1H103Z
C637	257 0014 935	Ceramic chip 0.1μF/25V	CK73F1E104Z
C638	254 4536 931	Electrolytic 220μF/10V	CE04W1A221M (SMG/RE3)
C639	257 0014 935	Ceramic chip 0.1μF/25V	CK73F1E104Z
C640	254 4536 931	Electrolytic 220μF/10V	CE04W1A221M (SMG/RE3)
C641	257 0014 935	Ceramic chip 0.1μF/25V	CK73F1E104Z
C642	254 4536 931	Electrolytic 220μF/10V	CE04W1A221M (SMG/RE3)
C643	257 0014 935	Ceramic chip 0.1μF/25V	CK73F1E104Z
C644	254 4536 931	Electrolytic 220μF/10V	CE04W1A221M (SMG/RE3)
C645	257 0014 935	Ceramic chip 0.1μF/25V	CK73F1E104Z
C646	254 4536 931	Electrolytic 220μF/10V	CE04W1A221M (SMG/RE3)
C647	257 0014 935	Ceramic chip 0.1μF/25V	CK73F1E104Z
C648	254 4536 931	Electrolytic 220μF/10V	CE04W1A221M (SMG/RE3)

Ref. No.	Part No.	Part Name	Remarks	Ref. No.	Part No.	Part Name	Remarks
C649	253 9039 906	Ceramic 0.1μF/25V	CK45=1E104Z	△ C851	253 8022 707	Ceramic 0.01 μF/250V (AC)	CK45F2EAC103M
C650	254 4536 931	Electrolytic 220μF/10V	CE04W1A221M (SMG/RE3)				
C651	253 9039 906	Ceramic 0.1μF/25V	CK45=1E104Z				
C652	254 4536 931	Electrolytic 220μF/10V	CE04W1A221M (SMG/RE3)				
C653,654	257 0014 935	Ceramic chip 0.1μF/25V	CK73F1E104Z	OTHER PARTS GROUP			
C655	254 4565 708	Electrolytic 12000μF/16V	CE04W1C123M (SMG)				Q'ty
C656	257 0014 935	Ceramic chip 0.1μF/25V	CK73F1E104Z	CW031,032	203 4379 022	3P KR-DS connector cord	2
C657	254 4442 711	Electrolytic 10000μF/16V	CE04W1C103M (SMG)	CW071	204 2309 042	7P KR-DS connector cord	1
C658	257 0014 935	Ceramic chip 0.1μF/25V	CK73F1E104Z	CX021,022	205 0581 001	2P VH connector base	2
C659	254 4539 718	Electrolytic 2200μF/16V	CE04W1C222M (SMG/RE3)	CX031,032	205 0355 033	3P KR connector base (L)	2
C664	257 0014 935	Ceramic chip 0.1μF/25V	CK73F1E104Z	CX071	205 0343 074	7P connector base (KR-PH)	1
C665	257 0012 966	Ceramic chip 0.01μF/50V	CK73F1H103Z	CX111	205 1135 003	8P MD connector base (F-S)	1
C668-671	257 0014 935	Ceramic chip 0.1μF/25V	CK73F1E104Z	CY021	205 0581 056	2P VH connector base	1
C676-681	257 0014 935	Ceramic chip 0.1μF/25V	CK73F1E104Z	CY081,082	205 0321 083	8P connector base (RED)	2
				CY271,272	205 0880 016	27P FFC connector base	2
C701,702	257 3011 919	Metallized chip 1000pF/50V	CF73=1H102J (ECHU)	FF601-603	202 0040 909	Fuse clip	3
C703	254 4538 955	Electrolytic 220μF/16V	CE04W1C221M (SMG/RE3)	FH601-603	202 0040 909	Fuse clip	3
C704	257 3011 919	Metallized chip 1000pF/50V	CF73=1H102J (ECHU)				
C705	254 4536 931	Electrolytic 220μF/10V	CE04W1A221M (SMG/RE3)				
C706	257 0012 908	Ceramic chip 1000pF/50V	CK73F1H102Z				
C707	257 0012 966	Ceramic chip 0.01μF/50V	CK73F1H103Z				
C708	254 4254 925	Electrolytic 33μF/16V	CE04W1C330M	JK701,702	204 8553 009	2P pin jack (FG-ANA)	2
C709	257 3006 924	Metallized chip 0.01μF/16V	CF73=1C103J (ECHU)	JK703,704	204 8406 020	1P pin jack	2
C710	257 0012 908	Ceramic chip 1000pF/50V	CK73F1H102Z	JK705,708	204 8421 005	Mini jack	2
C711,712	257 0012 966	Ceramic chip 0.01μF/50V	CK73F1H103Z				
C713	257 0008 983	Ceramic chip 1000pF/50V	CK73B1H102K	PT701,702	231 8063 009	Pulse trans.	2
C715	257 0012 966	Ceramic chip 0.01μF/50V	CK73F1H103Z				
C716,717	257 0014 935	Ceramic chip 0.1μF/25V	CK73F1E104Z	SW801,802	212 5604 907	Tact switch	2
C719,720	257 3011 919	Metallized chip 1000pF/50V	CF73=1H102J (ECHU)	△ SW851	212 1176 015	Power switch (TV-5)	1
C721	254 4538 955	Electrolytic 220μF/16V	CE04W1C221M (SMG/RE3)				
C722	257 3011 919	Metallized chip 1000pF/50V	CF73=1H102J (ECHU)				
C723	254 4536 931	Electrolytic 220μF/10V	CE04W1A221M (SMG/RE3)				
C724	257 0012 908	Ceramic chip 1000pF/50V	CK73F1H102Z				
C725	257 0012 966	Ceramic chip 0.01μF/50V	CK73F1H103Z				
C726	254 4254 925	Electrolytic 33μF/16V	CE04W1C330M				
C727	257 3006 924	Metallized chip 0.01μF/16V	CF73=1C103J (ECHU)				
C728	257 0012 908	Ceramic chip 1000pF/50V	CK73F1H102Z				
C729,730	257 0012 966	Ceramic chip 0.01μF/50V	CK73F1H103Z				
C731	257 0008 983	Ceramic chip 1000pF/50V	CK73B1H102K				
C733	257 0012 966	Ceramic chip 0.01μF/50V	CK73F1H103Z				
C734-736	257 0014 935	Ceramic chip 0.1μF/25V	CK73F1E104Z				
C737	257 0012 966	Ceramic chip 0.01μF/50V	CK73F1H103Z				
C738	257 0014 935	Ceramic chip 0.1μF/25V	CK73F1E104Z				
C739	257 0012 966	Ceramic chip 0.01μF/50V	CK73F1H103Z				
C741,742	257 0014 935	Ceramic chip 0.1μF/25V	CK73F1E104Z				
C751	254 4538 955	Electrolytic 220μF/16V	CE04W1C221M (SMG/RE3)				
C752-756	257 0014 935	Ceramic chip 0.1μF/25V	CK73F1E104Z				
C759-761	257 0014 935	Ceramic chip 0.1μF/25V	CK73F1E104Z				
C762	257 0012 966	Ceramic chip 0.01μF/50V	CK73F1H103Z				
C763-766	257 0014 935	Ceramic chip 0.1μF/25V	CK73F1E104Z				
C801-803	257 0014 935	Ceramic chip 0.1μF/25V	CK73F1E104Z				

GU-3227 DISPLAY P.W.B. UNIT ASS'Y

Ref. No.	Part No.	Part Name	Remarks	Ref. No.	Part No.	Part Name	Remarks
SEMICONDUCTORS GROUP				RESISTORS GROUP			
IC101	262 2463 007	IC MN102L2503	CAT28 F010P 09 (P)	LD309	393 9543 907	LED SLR-325VC	Red
IC102	262 2103 008	IC CAT28C64BP-15		LD310	393 9543 910	LED SLR-325MC	Green
IC103	GEN 4696	SYSTEM ROM SUB ASS'Y		LD311	393 9543 923	LED SLR-325DC	Orange
IC104	262 2452 908	IC MN1382-R (TX)		LD312,313	393 9571 908	LED TLGU1002	Green
IC105	262 2090 904	IC MAX202CSE		LD316	393 9543 910	LED SLR-325MC	Green
IC201	262 1954 902	IC M66004FP		LD317,318	393 9570 909	LED TLRA1002	Red
IC202	262 2251 905	IC TC74AC138F (EL)		LD320-322	393 9571 908	LED TLGU1002	Green
IC203	262 2745 903	IC BU2090F (E2)		LD325,326	393 9571 908	LED TLGU1002	Green
IC301	262 1954 902	IC M66004FP		LD327	393 9543 910	LED SLR-325MC	Green
IC302	262 2251 905	IC TC74AC138F (EL)		LD328	393 9543 907	LED SLR-325VC	Red
IC303	262 2745 903	IC BU2090F (E2)		RESISTORS GROUP			
IC601	263 1043 007	IC UPC2405AHF		R101	247 0005 989	Carbon chip 220ohm 1/10W	RM73B--221J
TR201-204	269 0048 904	Transistor DTC143EK		R102-111	247 0009 985	Carbon chip 10kohm 1/10W	RM73B--103J
TR301-304	269 0048 904	Transistor DTC143EK		R112,113	247 0011 944	Carbon chip 47kohm 1/10W	RM73B--473J
D101	276 0438 910	Diode MA151A		R114-130	247 0009 985	Carbon chip 10kohm 1/10W	RM73B--103J
D201-211	276 0438 910	Diode MA151A		R131	247 0003 949	Carbon chip 220ohm 1/10W	RM73B--220J
D213-216	276 0438 910	Diode MA151A		R132-134	247 0009 985	Carbon chip 10kohm 1/10W	RM73B--103J
D301-311	276 0438 910	Diode MA151A		R135-138	247 0012 927	Carbon chip 100kohm 1/10W	RM73B--104J
D313-316	276 0438 910	Diode MA151A		R201-204	247 0007 929	Carbon chip 820ohm 1/10W	RM73B--821J
FL201	393 8046 007	FLD (CM1941M)		R205	247 0005 976	Carbon chip 200ohm 1/10W	RM73B--201J
FL301	393 8046 007	FLD (CM1941M)		R206,207	247 0005 950	Carbon chip 160ohm 1/10W	RM73B--161J
LD201	393 9543 923	LED SLR-325DC	Orange	R208,209	247 0006 917	Carbon chip 300ohm 1/10W	RM73B--301J
LD202,203	393 9571 911	LED TLOU1002	Orange	R212	247 0005 976	Carbon chip 200ohm 1/10W	RM73B--201J
LD204,205	393 9571 908	LED TLGU1002	Green	R213	247 0005 989	Carbon chip 220ohm 1/10W	RM73B--221J
LD208	393 9543 923	LED SLR-325DC	Orange	R214,215	247 0005 976	Carbon chip 200ohm 1/10W	RM73B--201J
LD209	393 9543 907	LED SLR-325VC	Red	R216	247 0006 917	Carbon chip 300ohm 1/10W	RM73B--301J
LD210	393 9543 910	LED SLR-325MC	Green	R217	247 0010 987	Carbon chip 27kohm 1/10W	RM73B--273J
LD211	393 9543 923	LED SLR-325DC	Orange	R218	247 0006 917	Carbon chip 300ohm 1/10W	RM73B--301J
LD212,213	393 9571 908	LED TLGU1002	Green	R221	247 0005 976	Carbon chip 200ohm 1/10W	RM73B--201J
LD216	393 9543 910	LED SLR-325MC	Green	R222,223	247 0006 917	Carbon chip 300ohm 1/10W	RM73B--301J
LD217,218	393 9570 909	LED TLRA1002	Red	R225-227	247 0005 976	Carbon chip 200ohm 1/10W	RM73B--201J
LD220-222	393 9571 908	LED TLGU1002	Green	R232,233	247 0007 932	Carbon chip 910ohm 1/10W	RM73B--911J
LD225,226	393 9571 908	LED TLGU1002	Green	R234	247 0005 976	Carbon chip 200ohm 1/10W	RM73B--201J
LD227	393 9543 910	LED SLR-325MC	Green	R235	247 0005 989	Carbon chip 220ohm 1/10W	RM73B--221J
LD228	393 9543 907	LED SLR-325VC	Red	R241,242	247 0009 985	Carbon chip 10kohm 1/10W	RM73B--103J
LD301	393 9543 923	LED SLR-325DC	Orange	R243,244	247 0007 945	Carbon chip 1kohm 1/10W	RM73B--102J
LD302,303	393 9571 911	LED TLOU1002	Orange	R301-304	247 0007 929	Carbon chip 820ohm 1/10W	RM73B--821J
LD304,305	393 9571 908	LED TLGU1002	Green	R305	247 0005 976	Carbon chip 200ohm 1/10W	RM73B--201J
LD308	393 9543 923	LED SLR-325DC	Orange	R306,307	247 0005 950	Carbon chip 160ohm 1/10W	RM73B--161J
				R308,309	247 0006 917	Carbon chip 300ohm 1/10W	RM73B--301J
				R312	247 0005 976	Carbon chip 200ohm 1/10W	RM73B--201J
				R313	247 0005 989	Carbon chip 220ohm 1/10W	RM73B--221J
				R314,315	247 0005 976	Carbon chip 200ohm 1/10W	RM73B--201J
				R316	247 0006 917	Carbon chip 300ohm 1/10W	RM73B--301J
				R317	247 0010 987	Carbon chip 27kohm 1/10W	RM73B--273J
				R318	247 0006 917	Carbon chip 300ohm 1/10W	RM73B--301J
				R321	247 0005 976	Carbon chip 200ohm 1/10W	RM73B--201J
				R322,323	247 0006 917	Carbon chip 300ohm 1/10W	RM73B--301J
				R325-327	247 0005 976	Carbon chip 200ohm 1/10W	RM73B--201J

Ref. No.	Part No.	Part Name	Remarks	Ref. No.	Part No.	Part Name	Remarks
R332,333	247 0007 932	Carbon chip 910ohm 1/10W	RM73B--911J	C407	257 0014 935	Ceramic chip 0.1μF/25V	CK73F1E104Z
R334	247 0005 976	Carbon chip 200ohm 1/10W	RM73B--201J	C601,602	257 0014 935	Ceramic chip 0.1μF/25V	CK73F1E104Z
R335	247 0005 989	Carbon chip 220ohm 1/10W	RM73B--221J				
R341,342	247 0009 985	Carbon chip 10kohm 1/10W	RM73B--103J	OTHER PARTS GROUP			
R343,344	247 0007 945	Carbon chip 1kohm 1/10W	RM73B--102J	AS103	205 0488 036	32P IC socket	1
R501,502	247 0003 949	Carbon chip 22ohm 1/10W	RM73B--220J	CW031	203 5012 061	3P SAN-PH connector cord	1
VR201	211 0849 007	Slide volume (C)		CX031	205 0343 032	3P connector base(KR-PH)	1
VR301	211 0849 007	Slide volume (C)		CX121-124	205 0850 059	12P connector base (BTMK-P)	4
CAPACITORS GROUP				CX181,182	205 0850 033	18P connector base (BTMK-P)	2
C101	257 0014 935	Ceramic chip 0.1μF/25V	CK73F1E104Z	CX201,202	205 0850 046	20P connector base (BTMK-P)	2
C102	254 4538 939	Electrolytic 47μF/16V	CE04W1C470M (SMG/RE3)	CY111	205 1135 003	8P MD connector base (F-S)	1
C103,104	257 0014 935	Ceramic chip 0.1μF/25V	CK73F1E104Z	CY121-124	205 0849 057	12P connector base (BTMK-S)	4
C105	257 0012 966	Ceramic chip 0.01μF/50V	CK73F1H103Z	CY181,182	205 0849 031	18P connector base (BTMK-S)	2
C106	254 4538 939	Electrolytic 47μF/16V	CE04W1C470M (SMG/RE3)	CY201,202	205 0849 044	20P connector base (BTMK-S)	2
C107	257 3006 924	Metallized chip 0.01μF/16V	CF73=1C103J (ECHU)	FB401-403	235 0049 900	Beads inductor	3
C108	254 4538 939	Electrolytic 47μF/16V	CE04W1C470M (SMG/RE3)	FB501	235 0106 908	EMI filter (21A05)	1
C109	257 0012 966	Ceramic chip 0.01μF/50V	CK73F1H103Z	JK501	204 8421 005	Mini jack	1
C110-113	257 0014 935	Ceramic chip 0.1μF/25V	CK73F1E104Z	S201-228	212 5604 907	Tact switch	28
C114	257 0012 966	Ceramic chip 0.01μF/50V	CK73F1H103Z	S229	212 0427 008	Shuttle	1
C119-123	257 0014 935	Ceramic chip 0.1μF/25V	CK73F1E104Z	S241	212 0433 005	Rotary encorder	1
C124	254 4538 939	Electrolytic 47μF/16V	CE04W1C470M (SMG/RE3)	S242	212 0410 002	Rotary encorder-JOG	1
C128	254 4538 942	Electrolytic 100μF/16V	CE04W1C101M (SMG/RE3)	S301-328	212 5604 907	Tact switch	28
C129,130	257 0002 921	Ceramic chip 10 pF/50V	CC73SL1H100D	S329	212 0427 008	Shuttle	1
C131-134	257 0014 935	Ceramic chip 0.1μF/25V	CK73F1E104Z	S341	212 0433 005	Rotary encorder	1
C201,202	257 0013 907	Ceramic chip 0.047μF/50V	CK73F1H473Z	S342	212 0410 002	Rotary encorder-JOG	1
C203-205	257 0014 935	Ceramic chip 0.1μF/25V	CK73F1E104Z	X101	399 0219 021	Crystal 12.288MHz	1
C206,207	257 0013 907	Ceramic chip 0.047μF/50V	CK73F1H473Z		479 0010 005	Push rivet	4
C208-211	257 0014 935	Ceramic chip 0.1μF/25V	CK73F1E104Z		513 8013 003	P-ROM seal	1
C212	257 0012 966	Ceramic chip 0.01μF/50V	CK73F1H103Z		461 0984 046	FL spacer	2
C213	257 0004 961	Ceramic chip 100pF/50V	CC73SL1H101J				
C214	257 0014 935	Ceramic chip 0.1μF/25V	CK73F1E104Z				
C215	257 0013 907	Ceramic chip 0.047μF/50V	CK73F1H473Z				
C216	257 0014 935	Ceramic chip 0.1μF/25V	CK73F1E104Z				
C301,302	257 0013 907	Ceramic chip 0.047μF/50V	CK73F1H473Z				
C303-305	257 0014 935	Ceramic chip 0.1μF/25V	CK73F1E104Z				
C306,307	257 0013 907	Ceramic chip 0.047μF/50V	CK73F1H473Z				
C308-311	257 0014 935	Ceramic chip 0.1μF/25V	CK73F1E104Z				
C312	257 0012 966	Ceramic chip 0.01μF/50V	CK73F1H103Z				
C313	257 0004 961	Ceramic chip 100pF/50V	CC73SL1H101J				
C314	257 0014 935	Ceramic chip 0.1μF/25V	CK73F1E104Z				
C315	257 0013 907	Ceramic chip 0.047μF/50V	CK73F1H473Z				
C316	257 0014 935	Ceramic chip 0.1μF/25V	CK73F1E104Z				
C402	257 0012 966	Ceramic chip 0.01μF/50V	CK73F1H103Z				
C403	257 0014 935	Ceramic chip 0.1μF/25V	CK73F1E104Z				
C404	254 3056 962	Electrolytic 22μF/50V	CE04D1H220MBP				
C406	254 4538 942	Electrolytic 100μF/16V	CE04W1C101M (SMG/RE3)				

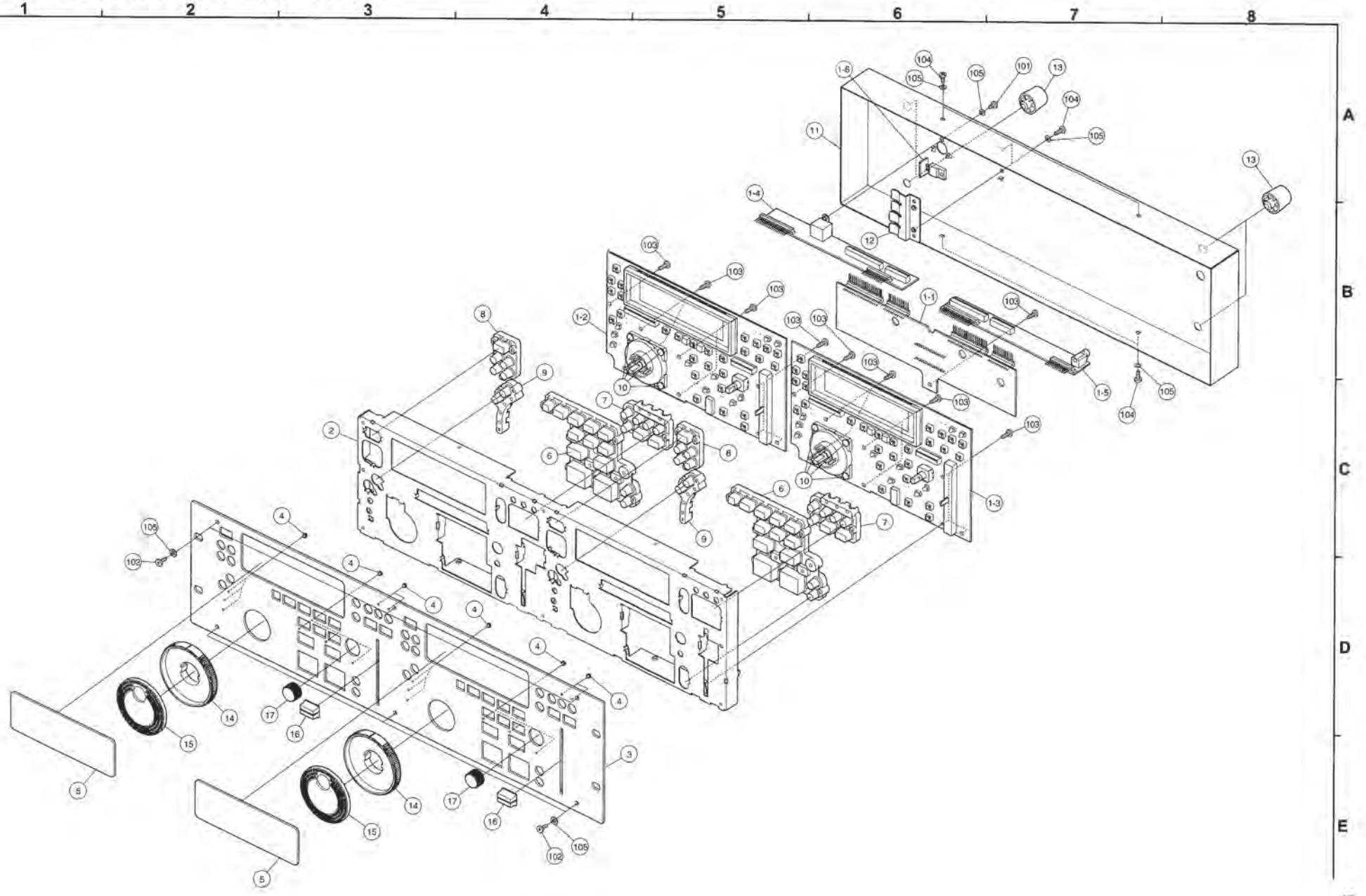
PARTS LIST OF RC-46 REMOTE CONTROL UNIT

Ref. No.	Part No.	Part Name	Remarks	Q'ty
1	GU-3227	Display P.W.B. unit Ass'y		1
1-1		CPU unit		
1-2		Display1 unit		
1-3		Display2 unit		
1-4		Connect unit		
1-5		Junction unit		
1-6		Regulator unit		
2	441 1920 005	RC front sub panel		1
3	144 2684 106	RC front panel		1
4	143 1072 004	Lens		16
5	146 2144 008	Window		2
6	119 0101 106	Rubber key (PLAY/PAUSE)		2
7	119 0102 008	Rubber key (PITCH BEND)		2
8	119 0103 007	Rubber key (OPEN/CLOSE)		2
9	119 0104 006	Rubber key (JOG MODE)		2
10	479 0010 005	Push rivet		8
11	105 1325 102	Cover		1
12	412 9371 001	Spring plate		1
13	104 0270 006	Foot		4
14	112 0843 007	Shuttle ring		2
15	112 0852 001	Jog dial Ass'y		2
16	113 1840 109	Slide knob		2
17	112 0820 017	Knob (Maru)		2
★ 19	513 3349 002	Caution label		1

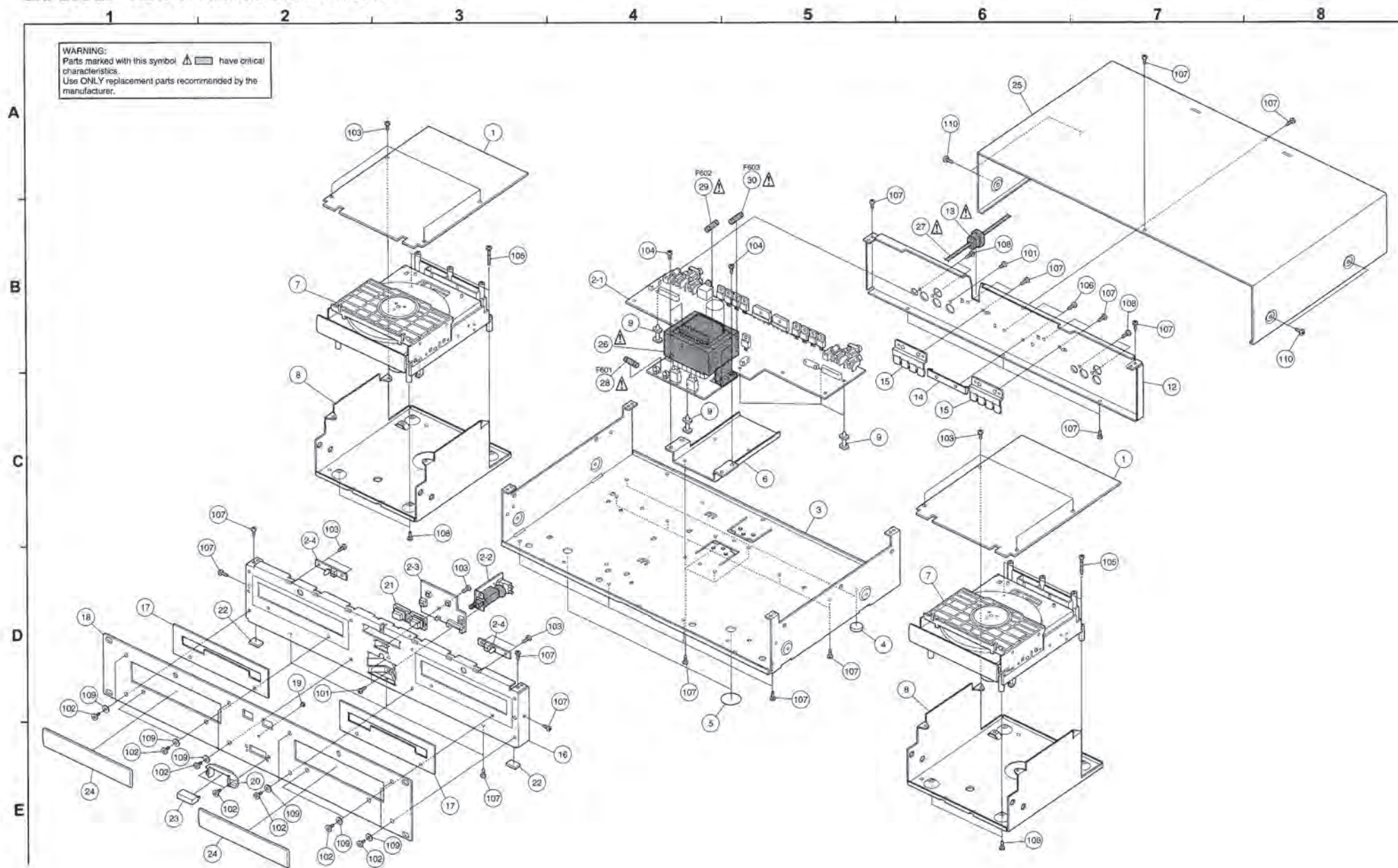
SCREWS & NUTS

101	471 3303 029	Screw 3×6 CBS-B		1
102	471 9050 020	Screw 3×6 FHHS MFZNII-B		6
103	473 7002 005	Screw 3×6 CBTS (S)-Z		17
104	473 7002 021	Screw 3×8 CBTS (S)-B		6
105	475 1178 009	Washer 3W-B		13

EXPLODED VIEW OF RC-46 REMOTE CONTROL UNIT



EXPLODED VIEW OF CHASSIS AND CABINET



PARTS LIST OF EXPLODED VIEW

Note: The symbols in the column "Remarks" indicate the following destinations:
 E3: U.S.A./Canada model
 EK: U.K. model
 E2: Europe model

Ref. No.	Part No.	Part Name	Remarks	Q'ty	Ref. No.	Part No.	Part Name	Remarks	Q'ty
1	GU-3225	Main P.W.B. unit Ass'y		2	★ 46	513 2303 007	Version label		1
2	GU-3226	Power P.W.B. unit Ass'y		1	★ 47	513 2728 006	Caution sheet (PU)		1
2-1		Power unit			★ 48	513 1519 009	Manufacture date label	for E3	1
2-2		P. SW. unit			★ 49	513 2521 009	CE label	for E2/EK	1
2-3		OP/CL SW. unit			★ 50	513 3160 100	E3 label	for E3	1
2-4		LED unit			★ 51	513 0985 003	Inst. label	for E2/EK	1
3	411 1923 001	Chassis		1	★ 52	513 3384 009	C-UL mark US (813)	for E3	
4	461 0706 127	Foot sheet		2	★ 53	513 3253 004	C-TICK label	for E2/EK	1
5	513 3175 001	Blind label		2	★ 54	513 3159 001	FCC/class B caution	for E3	1
6	412 4343 102	Trans. bracket		1	SCREWS & NUTS				
7	337 0059 102	CD mecha. unit (CD93F8)		2	101	471 3303 029	Screw 3×6 CBS-B		3
8	412 4560 008	Mecha. bracket		2	102	471 9050 020	Screw 3×6 FHHS MFZNI-B		14
9	412 2814 086	Card spacer (L=14.8)		5	103	473 7002 005	Screw 3×6 CBTS (S)-Z		13
12	105 1324 200	Back panel		1	104	473 7004 003	Screw 4×8 CBTS (S)-Z		4
△ 13	445 0084 009	Cord bush	for E3	1	105	473 7005 057	Screw 3×25 CBTS (S)-Z		4
△ 13	445 0056 008	Cord bush	for E2/EK	1	106	473 7006 027	Screw 3×10 CBTS (S)-B		2
14	412 4580 004	Diode bracket		1	107	473 7015 018	Screw 3×8 CBTS (S)-B		30
15	412 9371 001	Spring plate		2	108	473 7508 017	Screw 3×10 CBTS (P)-B		8
16	441 1919 003	Front sub panel		1	109	475 1178 009	Washer 3W-B		12
17	415 0831 002	Blind sheet		2	110	477 0263 005	3P. swelling screw		4
18	144 2683 000	Front panel		1					
19	143 1072 004	Lens		1					
20	146 1661 016	Power SW. protector		1					
21	119 0069 125	Rubber key (B)		1					
22	461 0740 002	Sheet		2					
23	113 1357 207	P. SW. knob		1					
24	146 2067 101	Loader panel		2					
25	102 0425 253	Top cover		1					
△ 26	233 6311 005	Power trans.		1					
△ 27	206 2155 001	AC cord with connector E3	for E3	1					
△ 27	206 2089 106	AC cord with connector E2	for E2	1					
△ 27	206 2128 009	AC cord with connector EK	for EK	1					
△ 28	206 1039 034	Fuse 1A	F601, for E3	1					
△ 28	206 1036 008	Fuse 630mA	F601, for E2/EK	1					
△ 29	206 1039 092	Fuse 4.0AT	F602, for E3	1					
△ 29	206 1015 087	Fuse 4.0A	F602, for E2/EK	1					
△ 30	206 1039 069	Fuse 3.15A	F603, for E3	1					
△ 30	206 1015 074	Fuse 3.15A	F603, for E2/EK	1					
★ 31	445 8028 009	Cord holder		1					
★ 32	445 0033 005	Wire clamp band		2					
★ 33	203 8440 025	5P PH-PH connector cord	CX051 to Mecha.	2					
★ 34	204 2469 050	8P PH-PH connector cord	CX083 to Mecha.	2					
★ 35	204 0479 042	6P connector cord (Red)	CX061 to Mecha.	2					
★ 36	203 8440 038	5P PH-PH connector cord (Red)	CX052 to Mecha.	2					
★ 37	009 0133 042	27P FFC	CX271 to CY271	2					
★ 38	204 2661 049	8P PH-PH connector cord	CX081 to CY081	2					
★ 39	203 5132 080	3P VH connector cord	CX021 to CY021	1					
★ 40	513 2065 002	E2 laser caution	for E2	2					
★ 41	513 3402 004	Fuse label	for F601, for E2/EK	1					
★ 42	513 3402 017	Fuse label	for F602, for E2/EK	1					
★ 43	513 3402 020	Fuse label	for F603, for E2/EK	1					
★ 44	513 3335 003	Fuse caution label	for E3	1					
★ 45	513 3161 073	Rating sheet	for E3	1					
★ 45	513 3161 060	Rating sheet	for E2/EK	1					

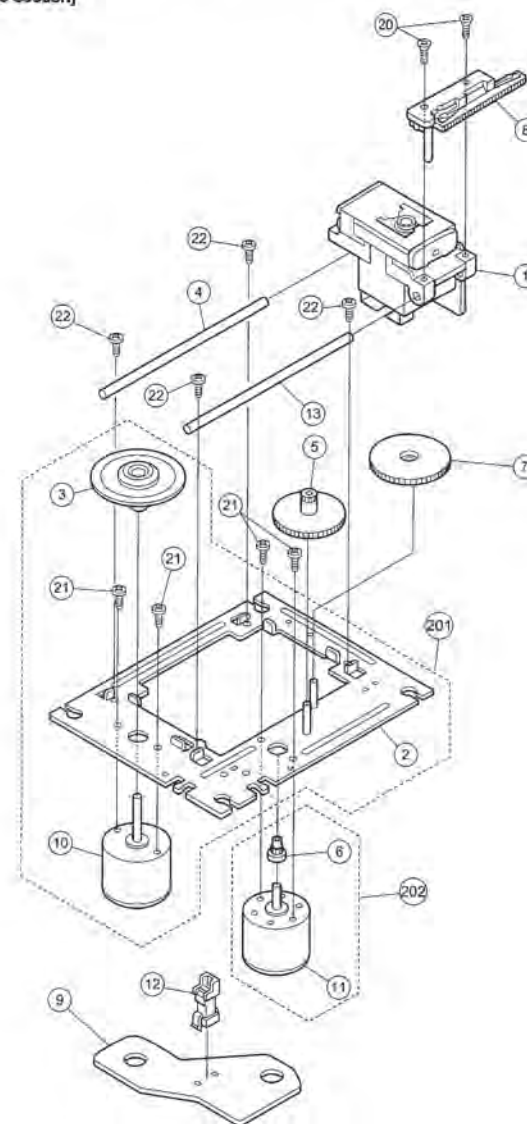
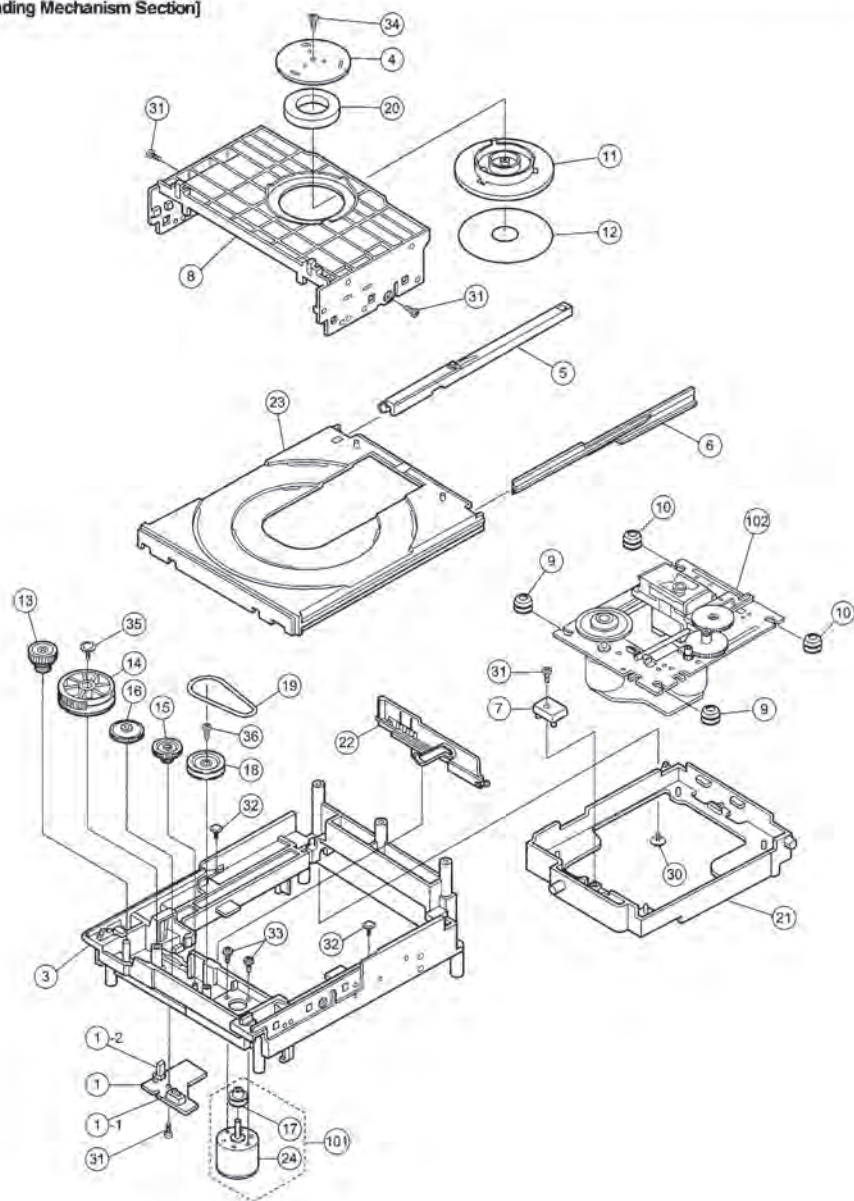
PARTS LIST OF MECHANISM UNIT (CD93F8)

Ref. No.	Part No.	Part Name	Remarks	Q'ty	Ref. No.	Part No.	Part Name	Remarks	Q'ty
Loading Mechanism Section					201	964 0007 011	Motor chassis Ass'y		1
1	964 0001 004	PCB switch Ass'y		1	202	964 0007 105	Motor Ass'y		1
1-1	964 0003 507	Push switch	SW01	1	20	964 0006 009	Screw 2 x 5		2
1-2	964 0003 400	Leaf switch	SW02	1	21	964 0006 106	Screw 1.7 x 2.5		4
3	964 0001 101	Frame chassis		1	22	964 0006 203	Special screw		4
4	964 0001 208	Magnet plate		1					
5	964 0001 305	Rail left Ass'y		1					
6	964 0001 402	Rail right		1					
7	964 0001 509	Chassis stopper		1					
8	964 0001 606	Magnet support		1					
9	964 0001 703	Rubber cushion (Blue)		2					
10	964 0001 800	Rubber cushion (Purple)		2					
11	964 0001 907	Magnet holder		1					
12	964 0002 003	Sheet		1					
13	964 0002 100	Loading gear		1					
14	964 0002 207	Lifter gear		1					
15	964 0002 304	Idler gear A		1					
16	964 0002 401	Idler gear B		1					
17	964 0002 508	Pulley motor		1					
18	964 0002 605	Pulley gear		1					
19	964 0002 702	Square belt		1					
20	964 0002 809	Disk clamp magnet		1					
21	964 0002 906	Lifter mecha		1					
22	964 0003 002	Slide lifter		1					
23	964 0003 109	Table loading		1					
24	964 0003 206	Motor, 3.0V, 0.3W		1					
101	964 0003 303	Loading motor Ass'y		1					
102	964 0005 013	Traverse unit		1					
30	944 0025 219	Screw 3 x 8		1					
31	944 0056 013	Screw 2.6 x 8		4					
32	944 0048 384	Screw 2 x 6		2					
33	964 0004 001	Screw 1.7 x 3.5		2					
34	964 0004 108	Special screw		1					
35	964 0004 205	Screw 3 x 8		1					
36	964 0004 302	Screw 2.6 x 8		1					
Traverse Section									
1	964 0005 107	Laser pickup		1					
2	—	Chassis Ass'y		1					
3	—	Turntable Ass'y		1					
4	964 0005 204	Guide bar		1					
5	964 0005 301	Middle gear		1					
6	964 0005 408	Motor gear		1					
7	964 0005 505	Power gear		1					
8	964 0005 602	Rack plate		1					
9	964 0005 709	PCB motor		1					
10	—	Motor, 2.0V, 0.2W (Spindle Motor)		1					
11	—	Motor, 3.0V, 0.3W (Sled Motor)		1					
12	964 0005 806	Leaf switch		1					
13	964 0005 903	Pickup shaft		1					

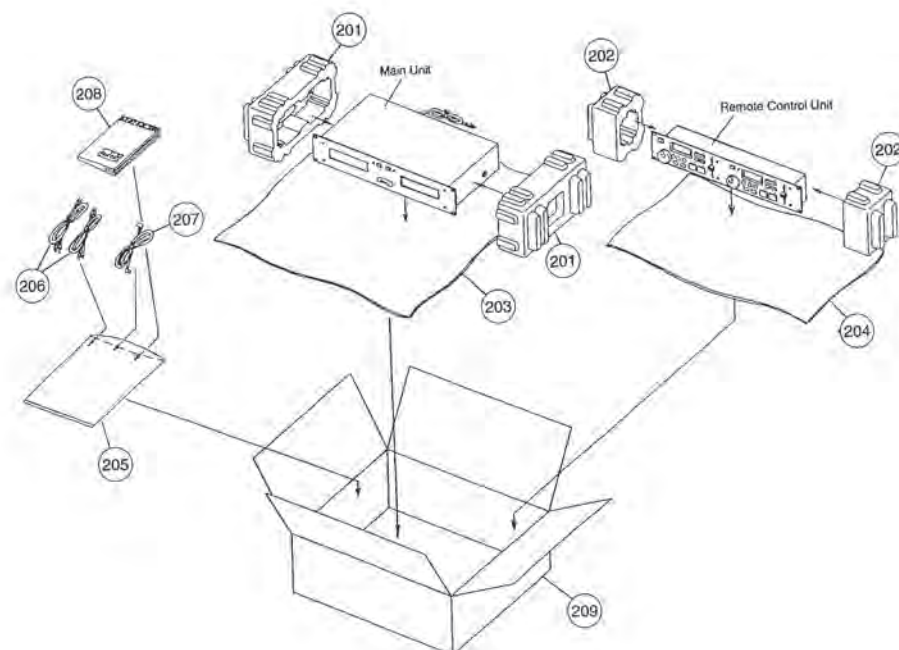
EXPLODED VIEW OF CD MECHANISM UNIT

[Loading Mechanism Section]

[Traverse section]



PACKING & ACCESSORIES



PARTS LIST OF PACKING & ACCESSORIES

Note: The symbols in the column "Remarks" indicate the following destinations:
 S: U.S.A./Canada model
 E: Europe model
 EK: U.K. model

Ref. No.	Part No.	Part Name	Remarks	Q'ty	Ref. No.	Part No.	Part Name	Remarks	Q'ty
201	503 1001 400	Cushion	for main unit	2	207	204 2750 002	8P MD connector cord (L)		1
202	503 1110 100	Cushion (RC)	for remote control unit	2	208	511 3534 002	Instruction manual		1
203	505 0102 092	Stylen paper	for main unit	1	209	501 1982 086	Carton case		1
204	505 0102 021	Stylen paper	for remote control unit	1	★ 210	513 3348 003	Caution label (Cord)		1
205	505 0038 030	Poly. cover		1	★ 211	513 2303 007	Version label		2
206	203 2360 004	2P Pin cord		2	★ 212	515 0682 101	DEL warranty card	for E3	1