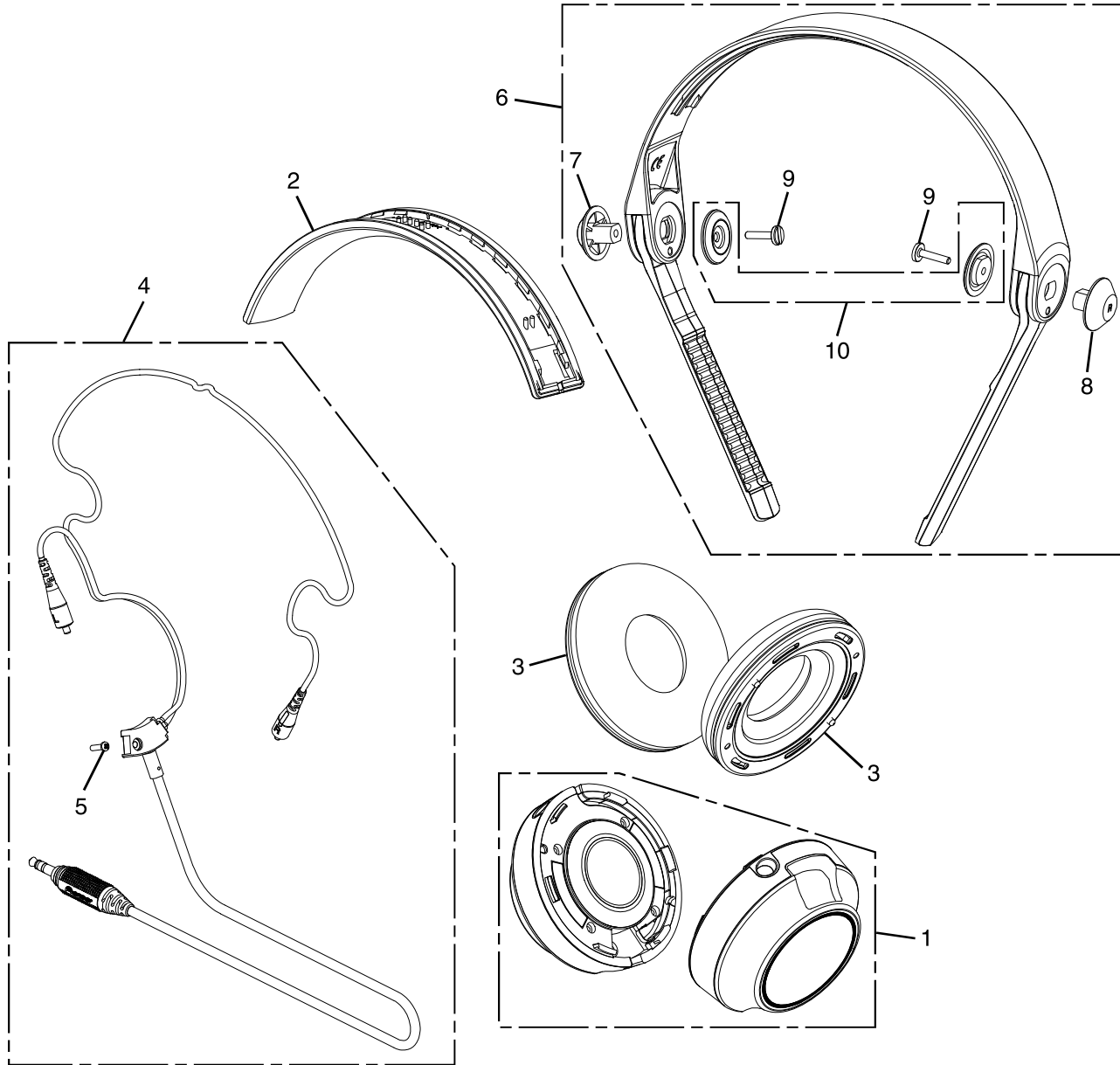


3. EXPLODED VIEWS AND PARTS LIST

NOTES: ● Parts marked by "NSP" are generally unavailable because they are not in our Master Spare Parts List.
 ● The \triangle mark found on some component parts indicates the importance of the safety factor of the part.
 Therefore, when replacing, be sure to use parts of identical designation.

3.1 EXTERIOR SECTION



EXTERIOR SECTION PARTS LIST

| Mark No. | Description | Part No. | Mark No. | Description | Part No. |
|----------|-------------------|------------|----------|------------------|----------|
| 1 | Housing Assy | WXX1589 | 6 | 1..Headband Assy | WXX1587 |
| 2 | Band Cushion Assy | WXX1588 | 7 | 2..Swing Shaft L | WNK4920 |
| 3 | Ear Pad Assy | WXX1590 | 8 | 2..Swing Shaft R | WNK4940 |
| 4 | 1..Cord Assy | WXX1592 | 9 | 2..Screw | WLA1087 |
| 5 | 2..Screw | PMZ20P070S | NSP 10 | 2..Washer | WNK4921 |

3.2 PACKING SECTION



Packing View

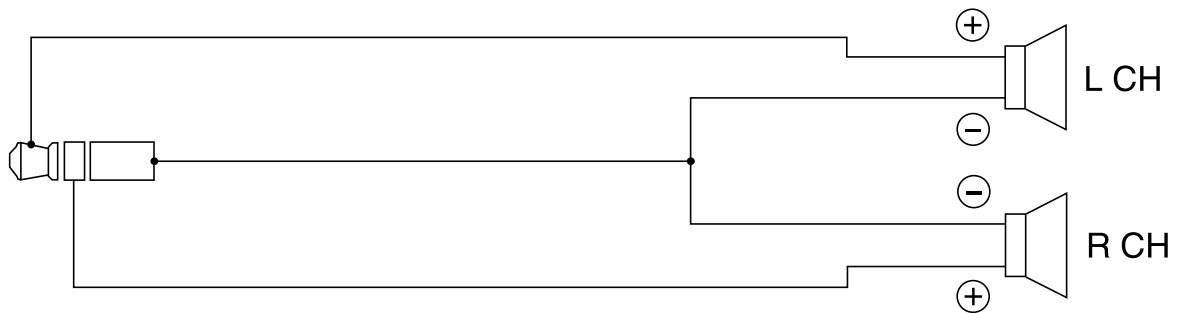


Exploded View

PACKING SECTION PARTS LIST

| Mark No. | Description | Part No. |
|----------|---------------|----------|
| 1 | Carrying Case | WHX1069 |
| 2 | Plug Adapter | WKX1044 |
| 3 | Screwdriver | WEY1006 |
| 4 | Cord Assy | WXX1593 |

4. SCHEMATIC DIAGRAM



The production lot label will be attached to the SP Base L.

The production year and week are indicated on it in 4 digits.



1 2 4 3

Example of an indication on the production lot label

43: 43rd week

12: Year 2012